

# Transportation Management Center Operations

*Technologies to Monitor Mobility and Provide Public Warning*



**Ryan Knapp, ITS Section Chief**

**Ian Kilburn, TMC Supervisor**

Operations and Safety Bureau (OSB)

Vermont Agency of Transportation

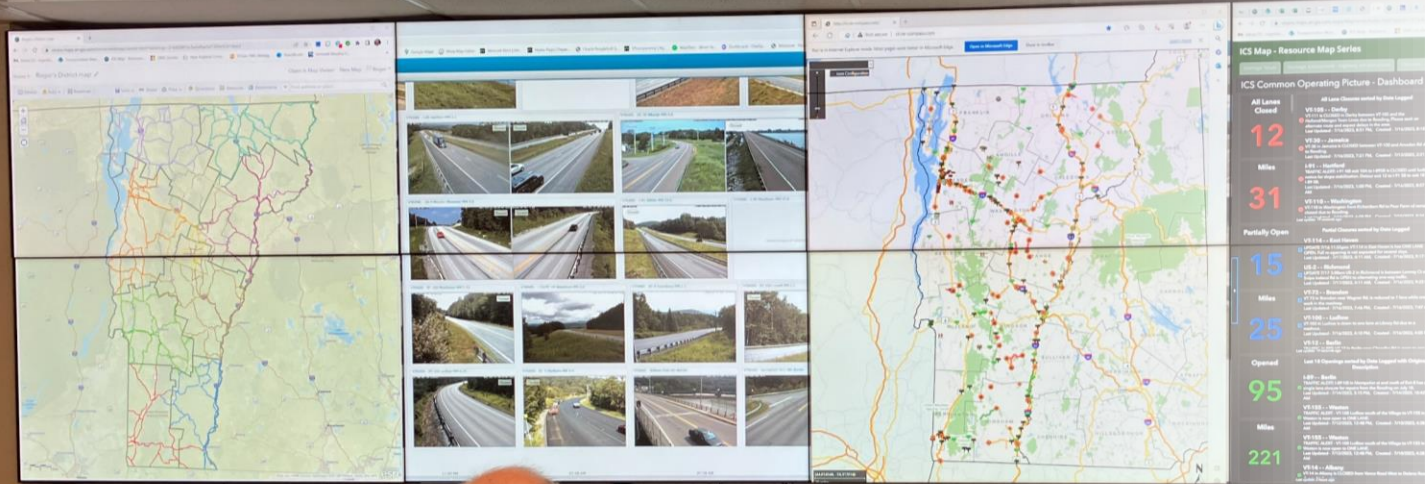
*Vermont Emergency Preparedness Conference— September 11, 2024*

# TMC Mission

*Detect, verify, and respond to incidents affecting mobility on Vermont's transportation infrastructure. Provide the public, State, and municipal agencies with timely, accurate, and impactful travel information to promote safe and efficient travel 24 hours daily.*



# TMC Overview



- Monitor Mobility Incidents:
  - Track and analyze mobility-related incidents and trips on State of Vermont maintained roadways.
- Disseminate Travel Information:
  - Effectively share travel information to keep the public informed.
- 24/7/365 Operations:
  - Maintain continuous operations around the clock, every day of the year.
- Central Information Hub:
  - Serve as the central hub for information flow, both internally and externally for the Agency of Transportation.
- Situation Unit Lead:
  - Assume the role of Situation Unit Lead for Incident Command System (ICS) activations.



# TMC Customers

- Effective Travel Information Distribution:
  - Deliver timely, accurate, and impactful travel information to various stakeholders.
- Stakeholders Include:
  - AOT District Maintenance, Fleet, and Executive Leadership
  - US DOT & Federal Highway Administration
  - Vermont State Police
  - Municipal Emergency Services
  - Vermont Emergency Management
  - State Agencies
  - Traveling Public






# Monitor Transportation Mobility

- Systems utilized

- Road Weather Information System (RWIS) – Vaisala
- Closed-circuit TV (CCTV)
- Big Transportation Data (Probe Data)
- WAZE
- Radio communications
- Telephone
- Email
- Social media
- Survey 123
- Plow Finder/AVL
- Changeable Message Signs
- New England Compass/511
- VT-Alert
- Wavetronix





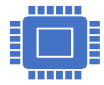
# Intelligent Transportation Systems (ITS)

---

- Advanced application to provide innovative and integrated technologies to provide safer, more coordinated, and smarter use of transportation networks.
- Enabling motorists and stakeholders to be more informed.



# Road Weather Information System (RWIS) & CCTV



## Environmental Sensors, Communication Systems, and Central Systems:

Integrated systems for comprehensive data collection.



## CCTV Cameras at Every Site:

Incorporation of CCTV cameras for real-time monitoring.



## Real-Time Imaging with CCTV:

Utilization of CCTV for immediate visualization of road conditions, aiding both AOT and the public.



## Diverse Array of Sensors:

Thermometer (air temperature)  
Anemometer (wind speeds)  
Wind Vane (wind directions)  
Visibility (site distance)  
Surface Sensors (road surface temperature, dry or wet states, water depth)  
Precipitation Type (light rain, rain, heavy rain, snow, sleet, freezing rain, etc.)  
Other Metrics (dew point, road friction coefficient, humidity)



## Wavetronix Integration:

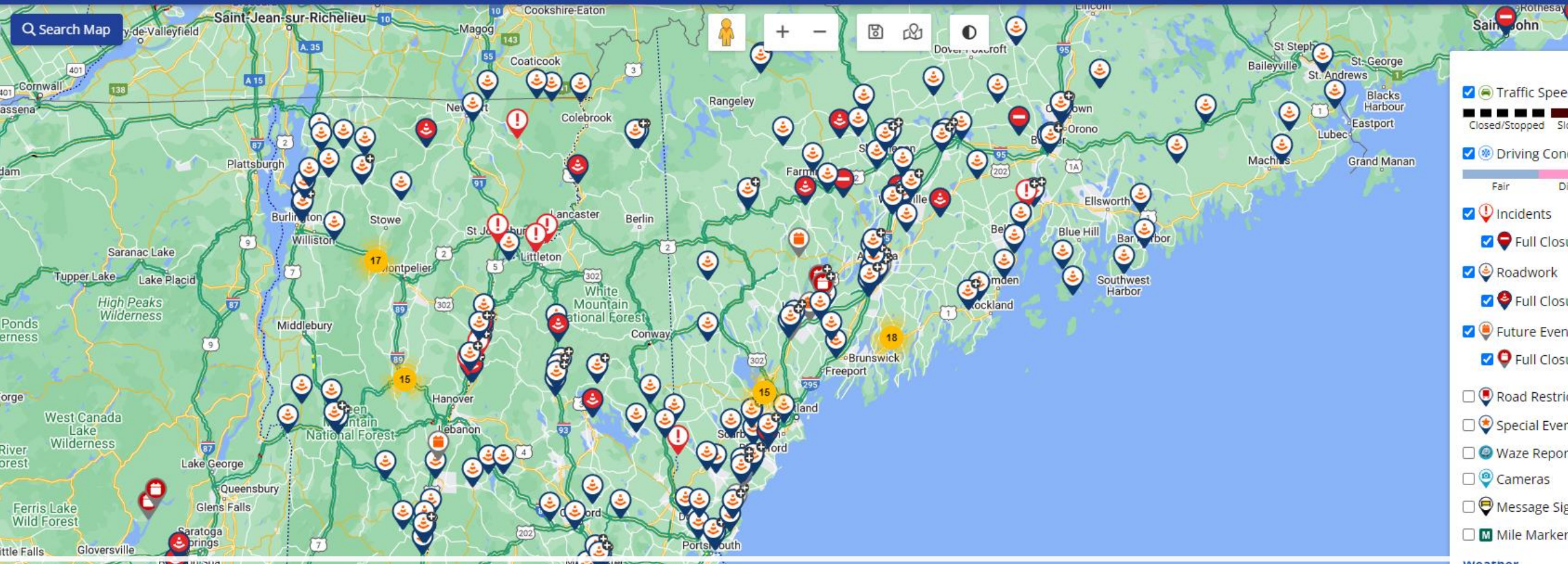
Provides traffic volume, speed data, and occupancy rate information.



## Integration with Systems:

Rules created for automated messaging on message boards.

ADVISORIES set of Dementia and has Memory issues. Was Driving a Silver Kia Soul License EAB1 Maine Plates. If seen Call 911 or 207-532-5400



- Traffic Speed
  - Closed/Stopped
  - Slow
- Driving Conditions
  - Fair
  - Diff
- Incidents
  - Full Closure
- Roadwork
  - Full Closure
- Future Events
  - Full Closure
- Road Restrictions
- Special Events
- Waze Reports
- Cameras
- Message Signs
- Mile Markers

- Weather**
- Road Weather
  - Weather Radar
  - Weather Alerts
  - Weather Forecast
- Maine**
- Park & Ride

# New England 511

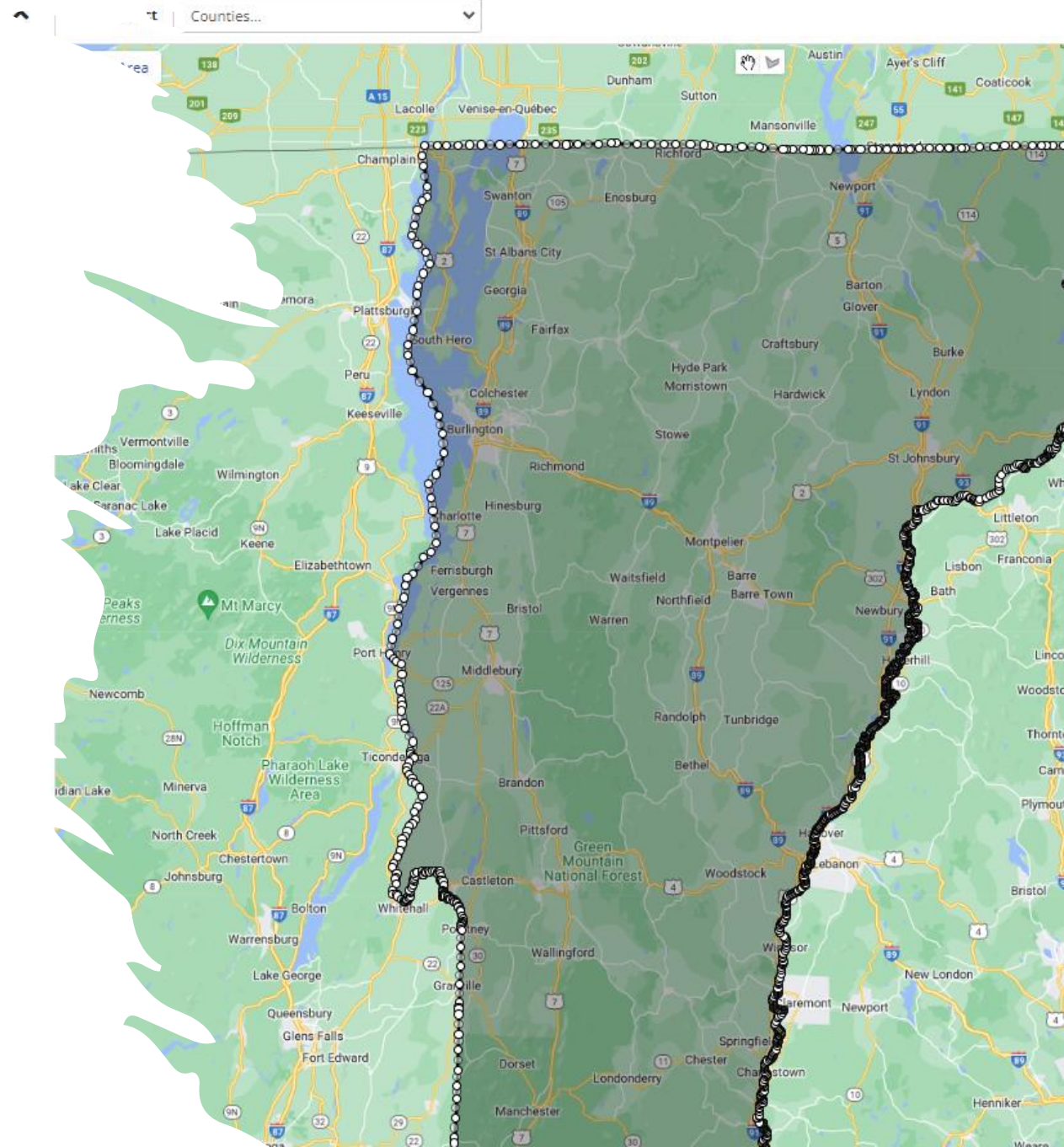


Map Satellite

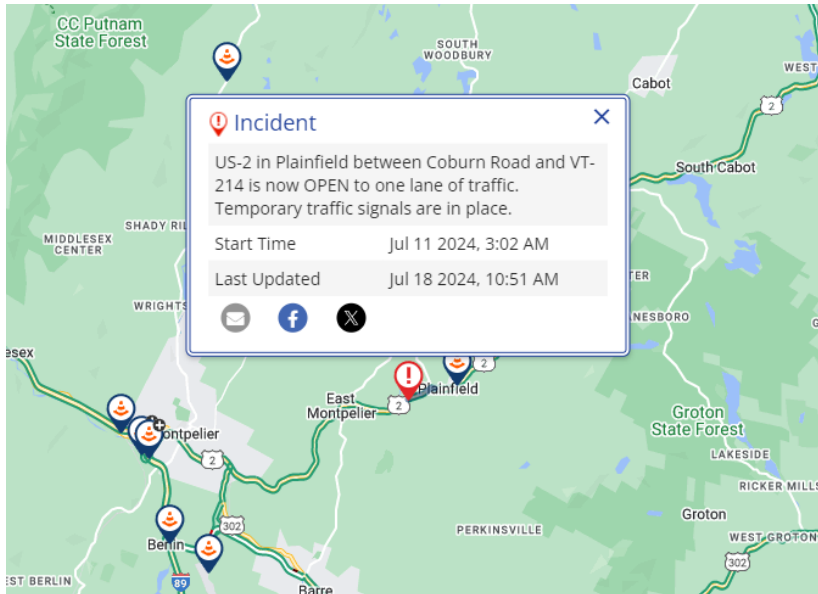


# New England 511

- Real-time traffic information:
  - Traffic events
  - Road conditions
  - Travel times
- Customization
  - Save routes
  - Set up notifications
  - User-preferred camera wall
- View live feeds
  - Camera (CCTV)
  - Message boards
  - RWIS data



# Disseminate Travel Information



Feb 14, 2023 at 08:49:36

## Traffic Events Within Windham County

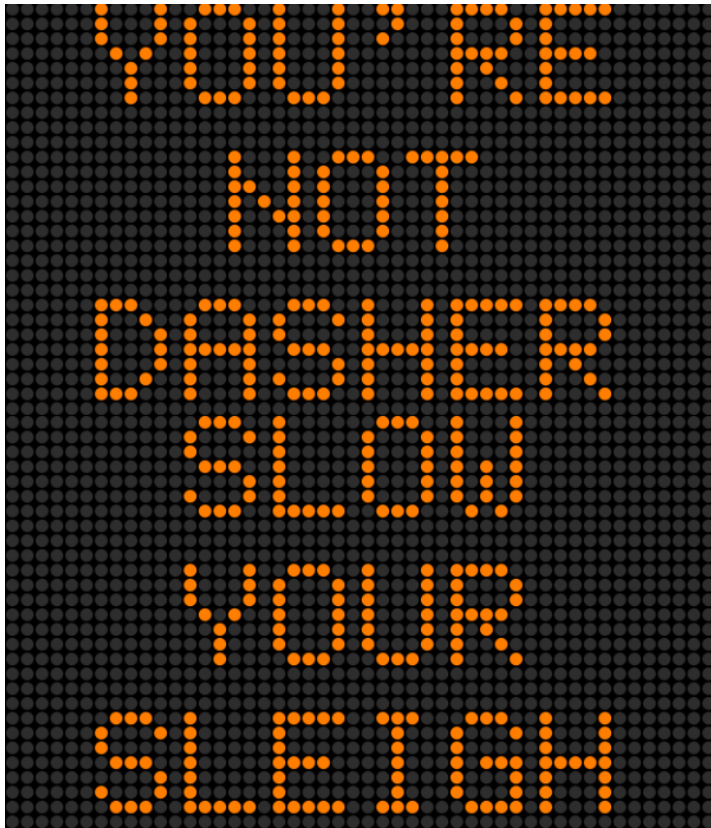
You have confirmed. ✓

**Event Description:** Roadwork Closure - Updated  
TRAFFIC ALERT: Today at 9 AM to 3 PM I-91 NB Westminster will be closed to all traffic between Exits 5 & 6 for bridge maintenance. Detour exit 5 to US 5 to Exit 6.  
Start Time Feb 14 2023, 9:00 AM  
Anticipated End Time Feb 14 2023, 3:00 PM

**Area Notification:** Windham County

[Click here](#) for all State of Vermont road closures.



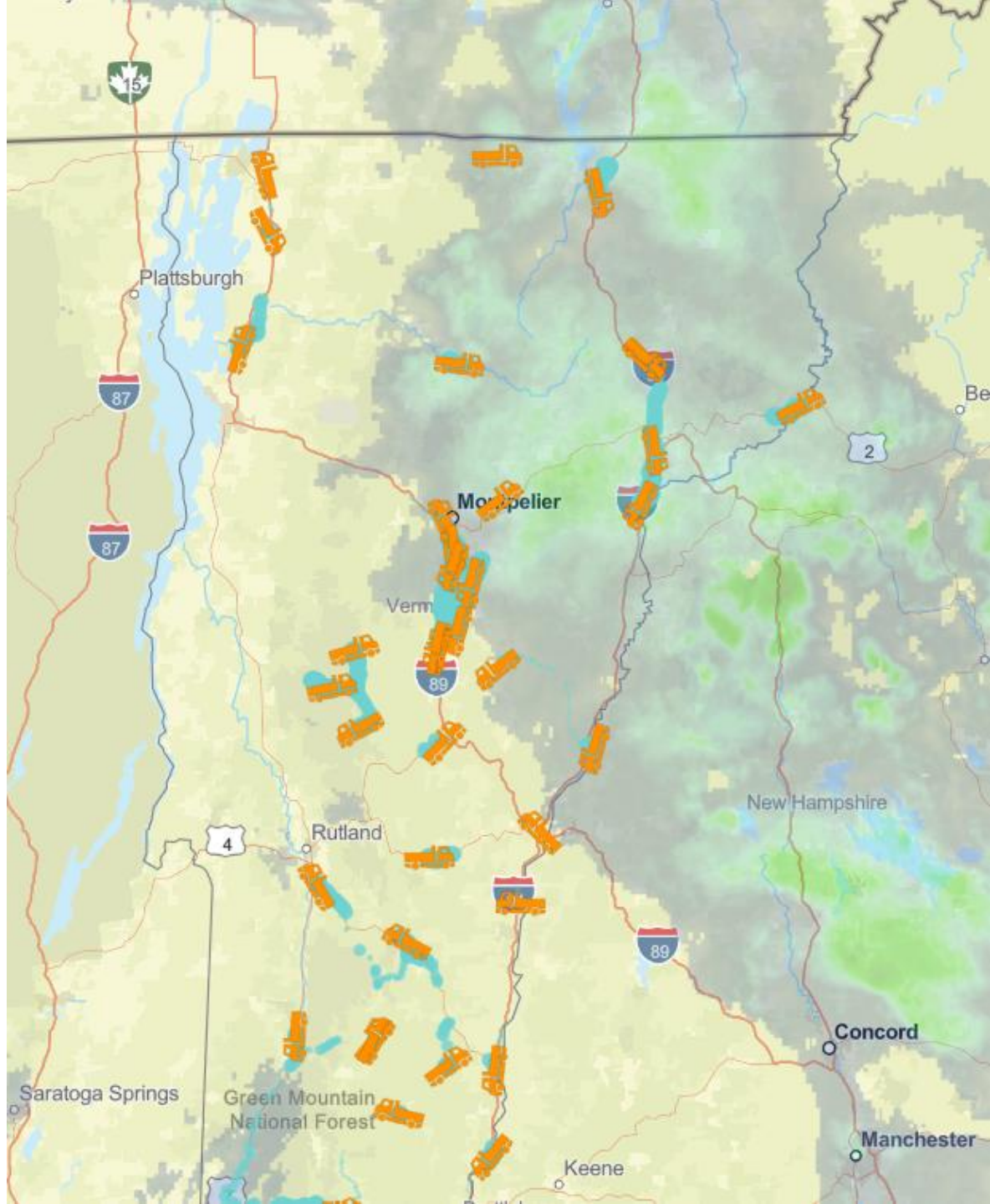
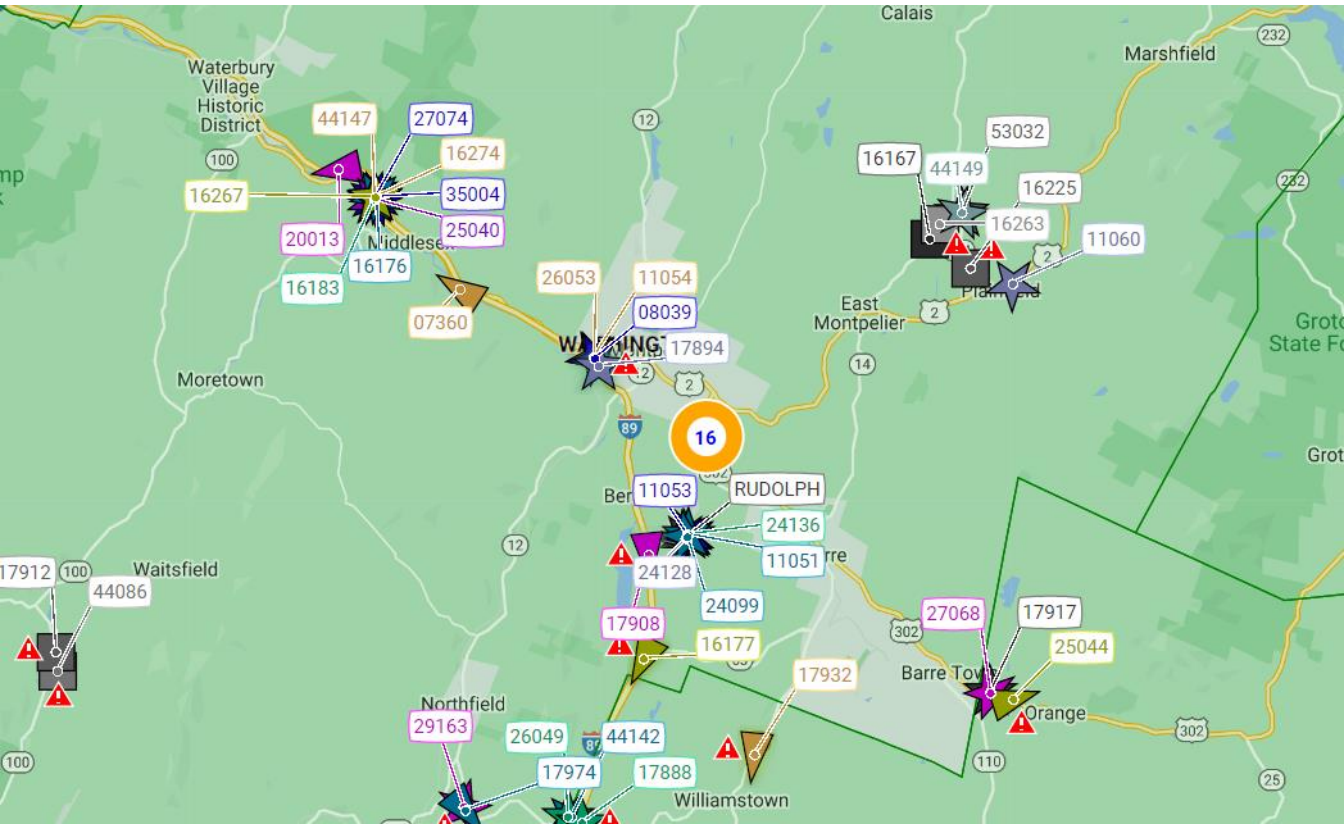


# Changeable Message Signs (CMS)

---

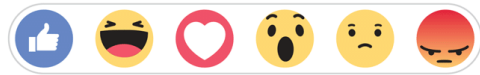
- AOT deploys message signs along state highways and interstates.
- Permanently mounted and portable
- Use cases:
  - Road closure notices
  - Traffic safety messages/safety campaigns
  - AMBER Alerts
  - VT Route 9 Chain-up Law
  - Automated "Low Grip"

# Automatic Vehicle Locating (AVL)/Plow Finder





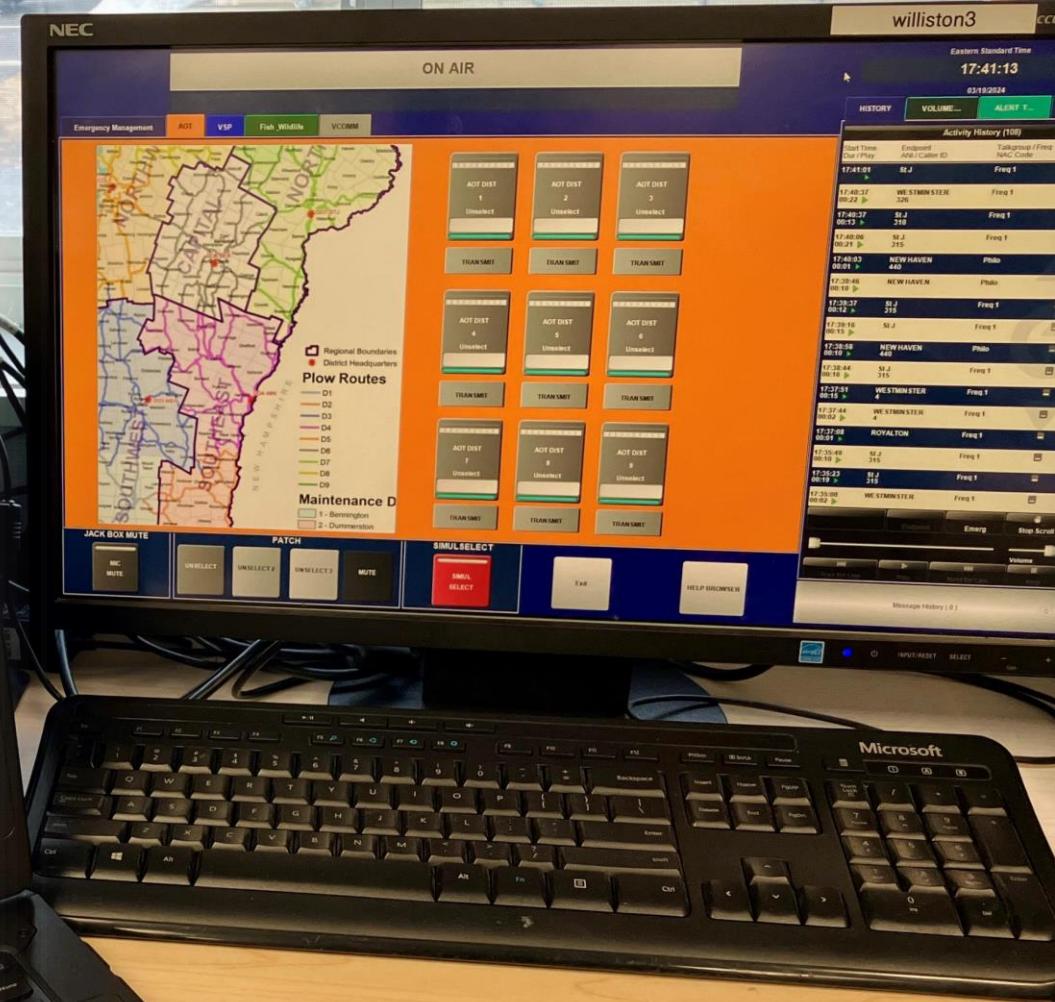
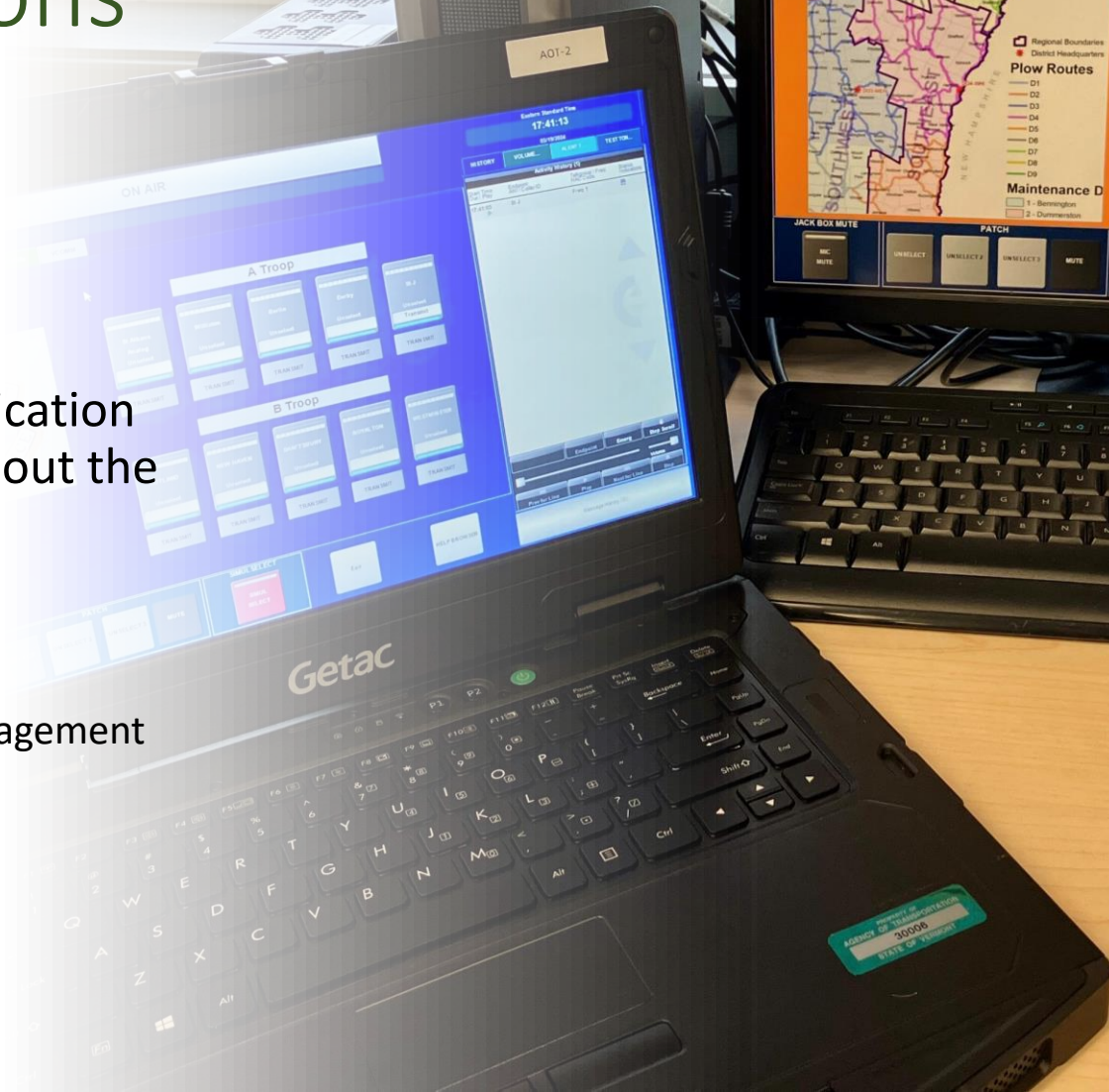
# Social Media



- Utilizing Agency of Transportation Facebook and Twitter pages to post real-time information about roadway conditions or issues impacting travel
- Monitor social media groups and comments for real-time information about roadway incidents that may not have been reported

# Radio Communications

- AVTEC Radio Consoles
  - Dispatch Consoles
  - Portable Consoles
- Maintain direct communication with VTrans staff throughout the state
- Capabilities to monitor:
  - Vermont State Police
  - Vermont Emergency Management
  - Fish & Game



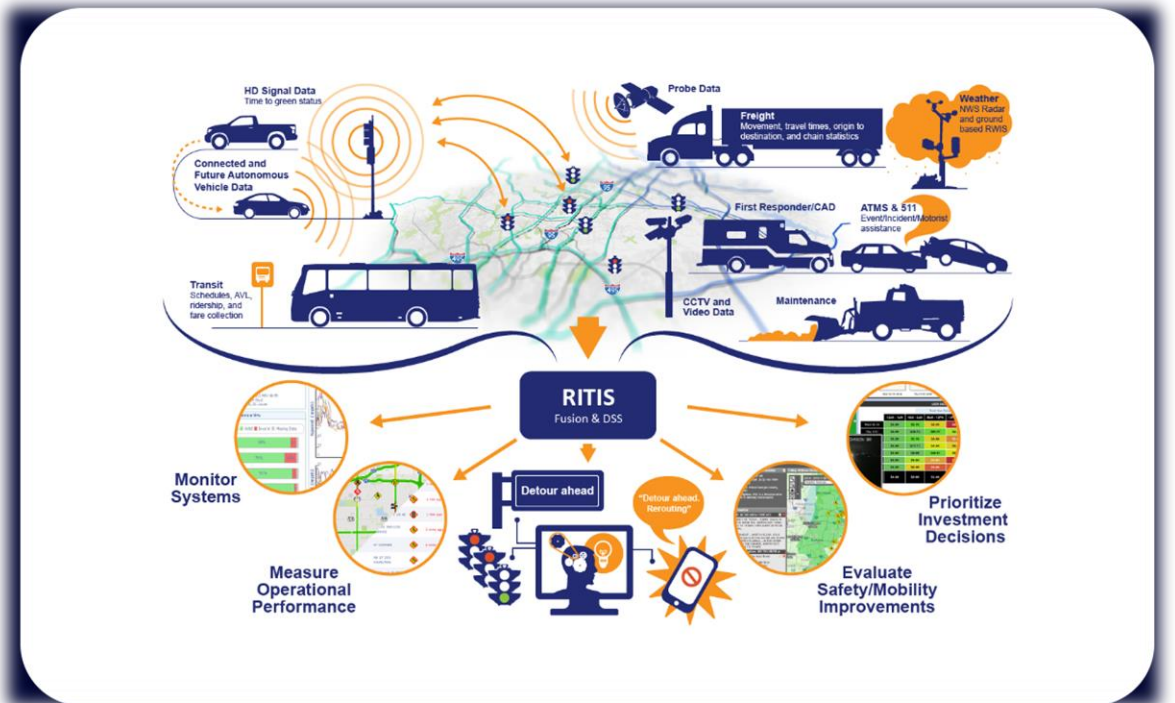


# Big Transportation Data & RITIS

- **Data Types:** Travel Time & Speed, Origin/Destination, Volume, Conflation (mapping)
- **Analytic Tool:** RITIS

## Use Cases

- Incident Detection and Response
- Integration into existing ITS structure
- Inform Crash and Network Screening Analysis
- Improve Project Development
- Improve fidelity to:
  - Statewide Speed analysis
  - Statewide Traffic volume analysis
  - Statewide Mobility analysis
- Increase border traffic understanding and fidelity
- Enable real-time data visualization and support to Execs
- Use freight information to improve economy





+ Create PM3 report

+ Add widget

Select a dashboard...

### I-89 Southbound Canada to Exit 16

Corridor	Average Speed			Travel Time		
	Differential	Current	Historical	Differential	Current	Historical
I-89 SB between United States/Canada Border and US-7/Exit 22	↓ 7	4 mph	11 mph	↑ 4	7 m	3 m
I-89 SB between US-7/Exit 22 and VT-78/Exit 21	↑ 1	65 mph	64 mph	0	6 m	6 m
I-89 SB between VT-78/Exit 21 and VT-207/Exit 20	↑ 2	68 mph	66 mph	0	5 m	5 m
I-89 SB between VT-207/Exit 20 and VT-104/Exit 19	↑ 5	69 mph	64 mph	↓ 1	3 m	4 m
I-89 SB between VT-104/Exit 19 and US-7/VT-104A/Exit 18	0	69 mph	69 mph	0	6 m	6 m
I-89 SB between US-7/VT-104A/Exit 18 and US-2/Exit 17	↑ 1	71 mph	70 mph	0	8 m	8 m
I-89 SB between US-2/Exit 17 and US-7/US-2/Exit 16	↑ 3	71 mph	68 mph	↓ 1	5 m	6 m

UsingINRIX data Updated Sep 11, 2023 10:17 AM (3s ago)

### I-89 Northbound Exit 16 to Canada

Corridor	Average Speed			Travel Time		
	Differential	Current	Historical	Differential	Current	Historical
I-89 NB between US-7/Exit 22 and CAN--USA NATIONAL BORDER	0	47 mph	47 mph	0	1 m	1 m
I-89 NB between VT-78/Exit 21 and US-7/Exit 22	↓ 1	70 mph	71 mph	0	5 m	5 m
I-89 NB between VT-207/Exit 20 and VT-78/Exit 21	↑ 2	69 mph	67 mph	0	5 m	5 m
I-89 NB between VT-104/Exit 19 and VT-207/Exit 20	↑ 6	74 mph	68 mph	0	3 m	3 m
I-89 NB between US-7/VT-104A/Exit 18 and VT-104/Exit 19	↑ 3	71 mph	68 mph	0	6 m	6 m
I-89 NB between US-2/Exit 17 and US-7/VT-104A/Exit 18	↓ 2	66 mph	68 mph	↑ 1	8 m	7 m
I-89 NB between US-7/US-2/Exit 16 and US-2/Exit 17	↑ 2	69 mph	67 mph	0	6 m	6 m

UsingINRIX data Updated Sep 11, 2023 10:17 AM (3s ago)

### I-89 Southbound Exit 8 to Exit 16

Corridor	Average Speed			Travel Time		
	Differential	Current	Historical	Differential	Current	Historical
I-89 SB between US-7/US-2/Exit 16 and VT-15/Exit 15	↑ 3	64 mph	61 mph	0	1 m	1 m
I-89 SB between VT-15/Exit 15 and US-2/Exit 14	0	60 mph	60 mph	0	1 m	1 m
I-89 SB between US-2/Exit 14 and I-189/Exit 13	↑ 1	61 mph	60 mph	0	1 m	1 m
I-89 SB between I-189/Exit 13 and VT-2A/Exit 12	0	65 mph	65 mph	0	3 m	3 m
I-89 SB between VT-2A/Exit 12 and US-2/Exit 11	↑ 1	68 mph	67 mph	0	5 m	5 m
I-89 SB between US-2/Exit 11 and VT-100/Exit 10	↑ 7	73 mph	66 mph	↓ 1	12 m	13 m
I-89 SB between VT-100/Exit 10 and Center Rd/Exit 9	↑ 1	70 mph	69 mph	0	4 m	4 m
I-89 SB between Center Rd/Exit 9 and Memorial Dr/Exit 8	↑ 5	75 mph	70 mph	0	5 m	5 m

UsingINRIX data Updated Sep 11, 2023 10:17 AM (3s ago)

### I-89 Northbound Exit 8 to Exit 16

Corridor	Average Speed			Travel Time		
	Differential	Current	Historical	Differential	Current	Historical
I-89 NB between VT-15/Exit 15 and US-7/US-2/Exit 16	↑ 4	64 mph	60 mph	0	1 m	1 m
I-89 NB between US-2/Exit 14 and VT-15/Exit 15	↑ 7	66 mph	59 mph	0	2 m	2 m
I-89 NB between I-189/Exit 13 and US-2/Exit 14	↑ 8	68 mph	60 mph	0	1 m	1 m
I-89 NB between VT-2A/Exit 12 and I-189/Exit 13	↑ 2	69 mph	67 mph	0	3 m	3 m
I-89 NB between US-2/Exit 11 and VT-2A/Exit 12	↑ 2	70 mph	68 mph	0	5 m	5 m
I-89 NB between VT-100/Exit 10 and US-2/Exit 11	↑ 3	70 mph	67 mph	0	13 m	13 m
I-89 NB between Center Rd/Exit 9 and VT-100/Exit 10	↓ 2	67 mph	69 mph	0	4 m	4 m
I-89 NB between Memorial Dr/Exit 8 and Center Rd/Exit 9	0	69 mph	69 mph	0	5 m	5 m

UsingINRIX data Updated Sep 11, 2023 10:17 AM (3s ago)

### I-89 Southbound Exit 8 to NH border

Corridor	Average Speed			Travel Time		
	Differential	Current	Historical	Differential	Current	Historical
I-89 SB between Memorial Dr/Exit 8 and VT-62/Exit 7	↑ 3	70 mph	67 mph	0	2 m	2 m
I-89 SB between VT-62/Exit 7 and VT-63/Exit 6	↑ 2	72 mph	70 mph	0	3 m	3 m
I-89 SB between VT-63/Exit 6 and VT-64/Exit 5	↑ 2	73 mph	71 mph	0	3 m	3 m
I-89 SB between VT-64/Exit 5 and VT-66/Exit 4	↑ 5	77 mph	72 mph	↓ 1	9 m	10 m
I-89 SB between VT-66/Exit 4 and VT-107/Exit 3	↑ 4	76 mph	72 mph	0	7 m	7 m
I-89 SB between VT-107/Exit 3 and VT-132/Exit 2	↑ 8	75 mph	67 mph	↓ 1	7 m	8 m
I-89 SB between VT-132/Exit 2 and US-4/Exit 1	↑ 2	73 mph	71 mph	0	8 m	8 m
I-89 SB between US-4/Exit 1 and I-91	0	70 mph	70 mph	0	3 m	3 m
I-89 SB between I-91 and VT--NH STATE BORDER	↓ 1	62 mph	63 mph	0	1 m	1 m

UsingINRIX data Updated Sep 11, 2023 10:17 AM (3s ago)

### I-89 Northbound NH Border to Exit 8

Corridor	Average Speed			Travel Time		
	Differential	Current	Historical	Differential	Current	Historical
I-89 NB between VT-62/Exit 7 and Memorial Dr/Exit 8	↓ 2	67 mph	69 mph	0	2 m	2 m
I-89 NB between VT-63/Exit 6 and VT-62/Exit 7	↓ 5	65 mph	70 mph	0	3 m	3 m
I-89 NB between VT-64/Exit 5 and VT-63/Exit 6	↓ 4	66 mph	70 mph	↑ 1	4 m	3 m
I-89 NB between VT-66/Exit 4 and VT-64/Exit 5	↑ 5	75 mph	70 mph	0	10 m	10 m
I-89 NB between VT-107/Exit 3 and VT-66/Exit 4	↑ 2	70 mph	68 mph	0	7 m	7 m
I-89 NB between VT-132/Exit 2 and VT-107/Exit 3	↑ 2	69 mph	67 mph	↓ 1	16 m	17 m
I-89 NB between US-4/Exit 1 and VT-132/Exit 2	0	68 mph	68 mph	0	9 m	9 m
I-89 NB between I-91 and US-4/Exit 1	↑ 3	68 mph	65 mph	0	3 m	3 m
I-89 NB between VT--NH STATE BORDER and I-91	↑ 2	61 mph	59 mph	-	0 m	-

UsingINRIX data Updated Sep 11, 2023 10:17 AM (3s ago)



Probe Data Analytics Suite

Welcome, TMC | My history | Tools | Settings | Logout

I-91

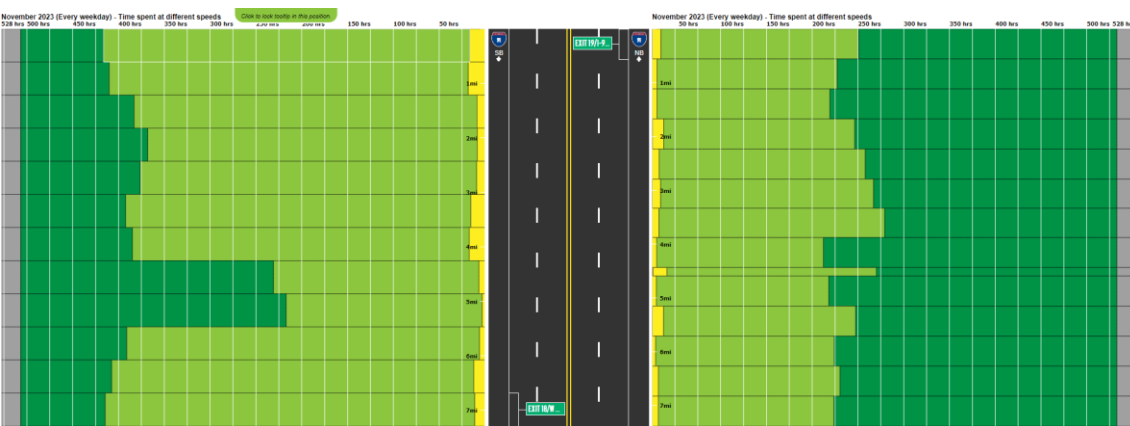
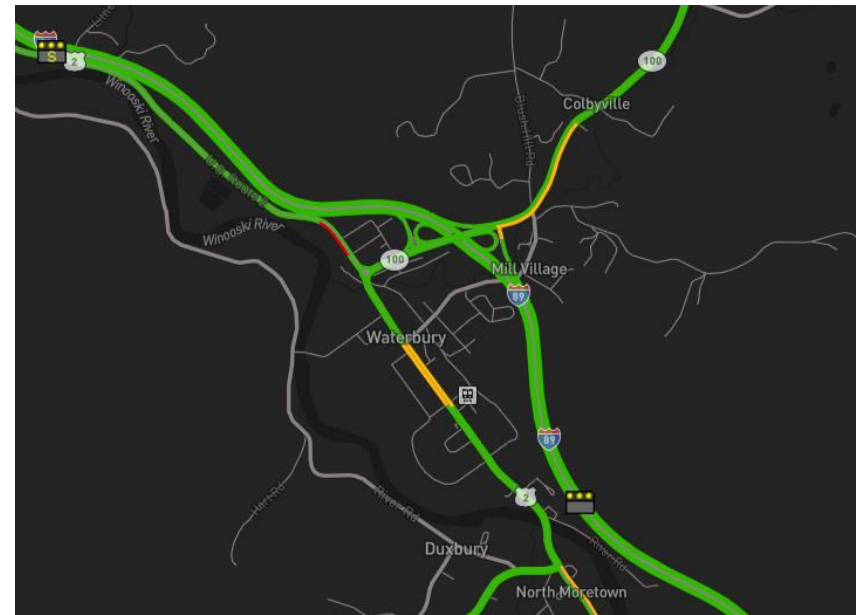
Create PKM report | Add widget | Select a dashboard...

I-91 Southbound Canada to Exit 13							I-91 Northbound Exit 13 to Canada										
Corridor			Average Speed			Travel Time			Corridor			Average Speed			Travel Time		
Differential	Current	Historical	Differential	Current	Historical	Differential	Current	Historical	Differential	Current	Historical	Differential	Current	Historical	Differential	Current	Historical
↓ 1	64	65	11	64	65	↓ 1	64	65	↓ 1	64	65	↓ 1	64	65	↓ 1	64	65
↓ 1	60	59	0	59	59	↓ 3	63	66	↓ 1	62	66	↓ 3	63	66	↓ 1	62	66
↓ 1	64	65	0	64	65	↓ 2	68	66	0	68	66	↓ 2	68	66	0	68	66
0	68	68	0	68	68	↓ 1	73	70	0	73	70	↓ 1	73	70	0	73	70
↓ 4	64	68	0	64	68	↓ 3	67	70	0	67	70	↓ 3	67	70	0	67	70
↓ 3	60	66	0	60	66	↓ 4	64	68	↓ 1	64	68	↓ 4	64	68	↓ 1	64	68
↓ 7	70	63	0	70	63	↓ 3	65	68	0	65	68	↓ 3	65	68	0	65	68
↓ 2	67	65	0	67	65	↓ 4	64	67	0	64	67	↓ 4	64	67	0	64	67
↓ 1	66	67	0	66	67	↓ 3	70	67	0	70	67	↓ 3	70	67	0	70	67
↓ 1	62	63	0	62	63	↓ 2	67	65	↓ 1	67	65	↓ 2	67	65	↓ 1	67	65
↓ 12	51	63	0	51	63	↓ 2	65	65	0	65	65	↓ 2	65	65	0	65	65
↓ 2	70	68	0	70	68	↓ 0	68	68	0	68	68	↓ 0	68	68	0	68	68
↓ 1	68	69	0	68	69	↓ 1	70	69	0	70	69	↓ 1	70	69	0	70	69
↓ 4	71	67	0	71	67	↓ 5	68	73	0	68	73	↓ 5	68	73	0	68	73
↓ 4	72	68	0	72	68	↓ 5	68	71	0	68	71	↓ 5	68	71	0	68	71
↓ 0	76	68	0	76	68	↓ 1	70	71	0	70	71	↓ 1	70	71	0	70	71
↓ 5	73	68	0	73	68	↓ 1	73	72	0	73	72	↓ 1	73	72	0	73	72

Updated Sep 5, 2023 2:08 PM (16 hrs ago)

I-91 Southbound Exit 13 to MASS border							I-91 Northbound MASS border to Exit 13										
Corridor			Average Speed			Travel Time			Corridor			Average Speed			Travel Time		
Differential	Current	Historical	Differential	Current	Historical	Differential	Current	Historical	Differential	Current	Historical	Differential	Current	Historical	Differential	Current	Historical
↓ 3	69	66	0	69	66	↓ 4	70	66	0	70	66	↓ 4	70	66	↓ 4	70	66
↓ 1	59	60	0	59	60	↓ 3	69	62	0	69	62	↓ 3	69	62	↓ 3	69	62
↓ 3	59	59	0	59	59	↓ 8	59	67	0	59	67	↓ 8	59	67	↓ 8	59	67
↓ 1	59	59	0	59	59	↓ 1	70	69	0	70	69	↓ 1	70	69	↓ 1	70	69
↓ 1	64	69	0	64	69	↓ 0	70	70	0	70	70	↓ 0	70	70	↓ 0	70	70
↓ 1	68	69	0	68	69	↓ 1	73	70	0	73	70	↓ 1	73	70	↓ 1	73	70
↓ 2	66	68	0	66	68	↓ 4	73	69	0	73	69	↓ 4	73	69	↓ 4	73	69
↓ 10	71	61	0	71	61	↓ 7	73	66	↓ 1	73	66	↓ 7	73	66	↓ 7	73	66
↓ 2	68	66	0	68	66	↓ 6	70	69	0	70	69	↓ 6	70	69	↓ 6	70	69
↓ 1	70	69	0	70	69	↓ 5	70	71	↓ 1	70	71	↓ 5	70	71	↓ 5	70	71
↓ 7	75	68	0	75	68	↓ 4	74	70	↓ 1	74	70	↓ 4	74	70	↓ 4	74	70
↓ 5	70	65	0	70	65	↓ 0	68	68	0	68	68	↓ 0	68	68	↓ 0	68	68
↓ 2	64	66	0	64	66	↓ 4	73	69	0	73	69	↓ 4	73	69	↓ 4	73	69
↓ 5	73	68	0	73	68	↓ 1	70	70	0	70	70	↓ 1	70	70	↓ 1	70	70

Updated Sep 5, 2023 2:08 PM (16 hrs ago)



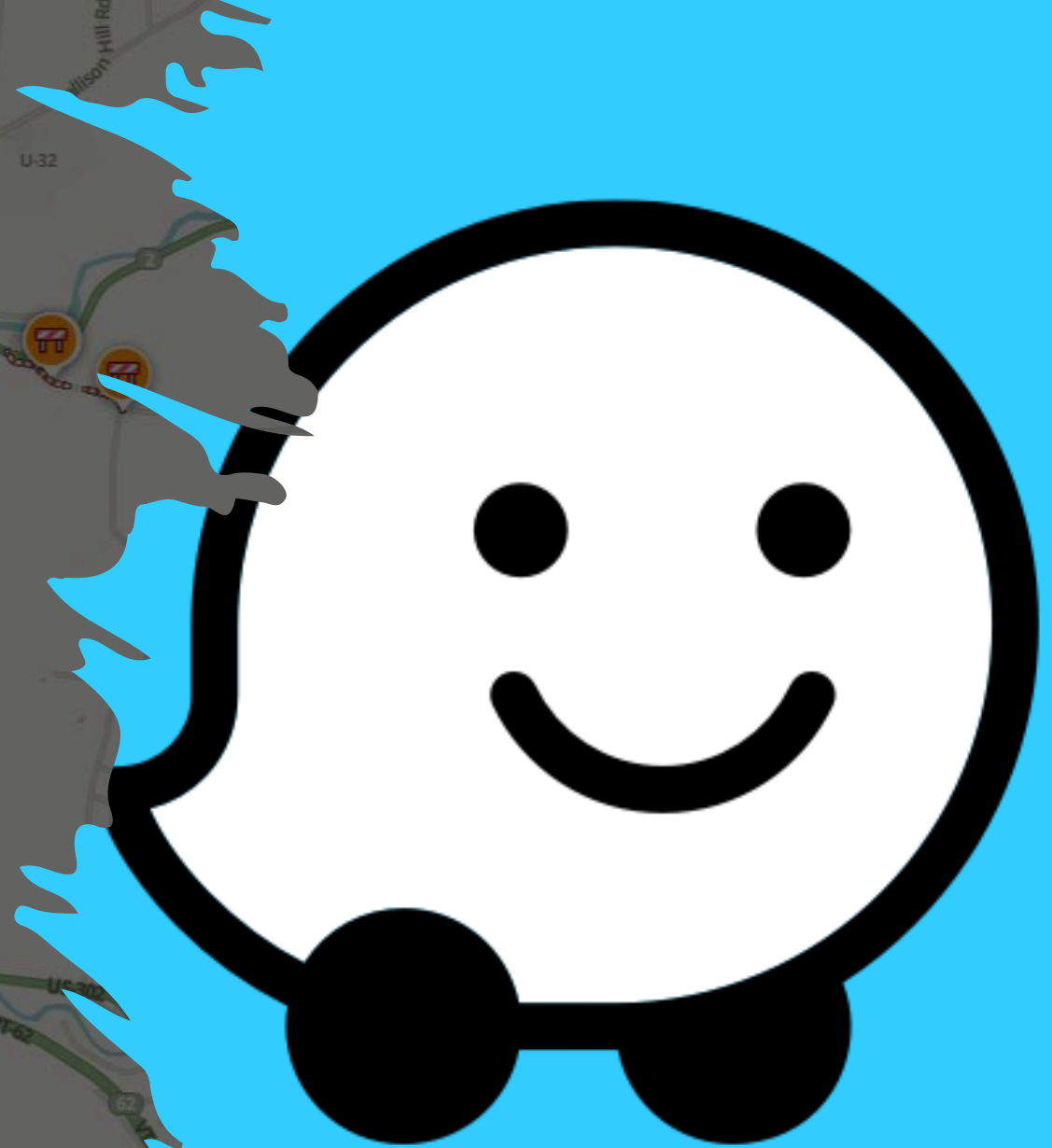
Transportation System Status

Data Archive | Personal Traffic Alerts

State	Source	Location	Type	Updated	Start Time	Lane Status	Event Details
VT	Waze	VT-108	Congestion Due to Closure	18 hrs 14 mins ago	11/14/23 08:57 PM	—	
VT	Waze	FOSTER POND RD	Congestion Due to Closure	6 hrs 42 mins ago	12/01/23 03:50 AM	—	
VT	Waze	King St in Chittenden County	Congestion Due to Closure	18 hrs 14 mins ago	07/21/23 03:50 PM	—	
VT	Waze	LINCOLN GAP RD	Congestion Due to Closure	18 hrs 14 mins ago	11/20/23 03:51 PM	—	
VT	Waze	VT-14	Congestion Due to Closure	18 hrs 14 mins ago	12/11/23 10:38 AM	—	
VT	Waze	FRANK TOWN	Congestion Due to Closure	6 hrs 42 mins ago	06/07/23 04:48 PM	—	
VT	Waze	THEY GIRD RD	Congestion Due to Closure	6 hrs 42 mins ago	04/26/23 08:50 PM	—	
VT	Waze	CAMBRIDGE JUNCTION RD	Congestion Due to Closure	6 hrs 42 mins ago	10/06/23 11:18 AM	—	
VT	Waze	RAVER RD	Congestion Due to Closure	18 hrs 14 mins ago	07/21/23 11:35 AM	—	
VT	VTems	VT-12 south @ MM 6,200	Construction Work	3 days ago	12/04/23 07:50 AM	2 of 5 lanes closed	TRAFFIC ALERT: VT-12 in Ferrisburgh north of the
VT	VTems	I-91 south @ MM 68,000	Obstructions	19 days ago	11/24/23 11:26 AM	2 of 3 lanes closed	TRAFFIC ALERT: I-91 SB in Ferrisburgh south of the
VT	VTems	VT-14 south @ MM 3,700	Construction Work	23 days ago	11/20/23 10:51 AM	2 of 5 lanes closed	TRAFFIC ALERT: VT-14 Woodbury intersection
VT	VTems	VT-65 east @ MM 2,800	Alert	28 days ago	11/15/23 07:50 AM	2 of 3 lanes closed	VT-65 over Sunset Lake the "Baldwin Bridge" is
VT	VTems	VT-110 north @ MM 4,800	Bridge Maintenance Operations	18 days ago	11/13/23 07:50 AM	2 of 5 lanes closed	TRAFFIC UPDATE: VT-110 in Ferrisburgh at Ferrisburgh
VT	VTems	VT-44 east @ MM 1,700	Construction Work	1 mo 12 days ago	11/06/23 07:50 AM	No lanes closed	Installation of a new lattice system within the
VT	VTems	Linnex Gap Rd east @ MM 6,000	Alert	1 mo 28 days ago	10/19/23 07:50 AM	2 of 3 lanes closed	TRAFFIC ALERT: The Linnex Glen between

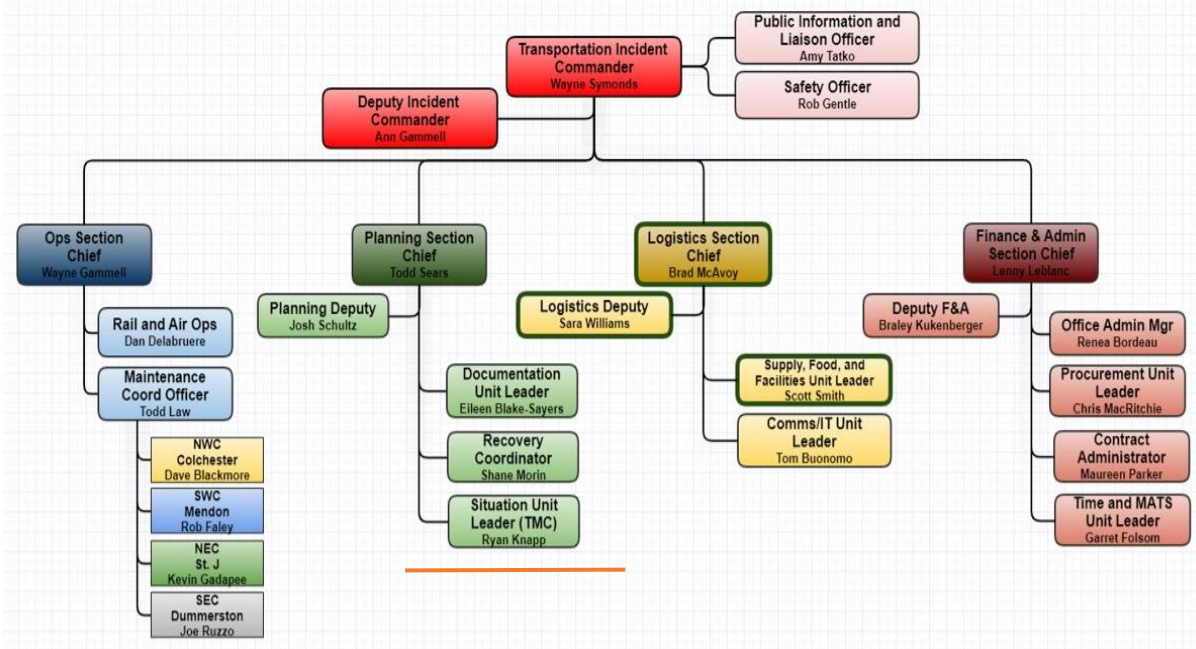
# Local Roads – Closures and Reporting

- Waze for Cities via the Waze Partner Hub
  - Free
  - Two-way communication with drivers
  - Waze Community





# ICS Activations



## Common Operating Picture (COP)

- 1) Situation Unit Leader
- 2) TMC Operator(s)
- 3) GIS Professional
- 4) AOT ↔ VEM/SEOC

The dashboard displays the following summary statistics:

- All Lanes Closed:** 3 Miles
- Partially Open:** 9 Miles
- Opened:** 152 Miles
- Total:** 293 Miles

The dashboard also features several sections for detailed incident information:

- All Lane Closures sorted by Date Logged:**
  - VT-116 -- Middlebury:** VT-116 in Middlebury is CLOSED between Quarry Road and Cady Road due to multiple washouts and flooding. Crews on the repairing damaged culvert and the dam at Dow Pond. Estimated reopening mid-October. Last Updated: 9/15/2023, 10:53 AM, Created: 8/3/2023, 9:47 PM
  - US-5 -- Barton:** Starting at Barn today (9/13) and lasting until 3pm Friday 9/15 US-5 in Barton/Oreans will be closed between May Farm Rd and Southend Ln while crews replace a culvert. A detour is in place. Last Updated: 9/14/2023, 2:30 AM, Created: 9/13/2023, 7:37 AM
  - I-91 -- Hartford:** TRAFFIC ALERT: I-91 NB exit 10A to I-89SB is CLOSED until further notice for slope stabilization. Detour via I-29 to I-91 SB to exit 19 to I-89 SB. Last Updated: 9/14/2023, 2:30 AM, Created: 7/16/2023, 8:57 AM
- Partial Closures sorted by Date Logged:**
  - VT-103 -- Cavendish:** VT-103 in Cavendish (Proctorville Gulf) south of Cutoff Rd is reduced to ONE LANE due to Flood damage. One-way alternating traffic is in place. Estimated full reopening mid-October. Last Updated: 9/15/2023, 10:55 AM, Created: 7/20/2023, 3:17 PM
  - VT-125 -- Ripton:** TRAFFIC ALERT: VT-125 in Ripton between Maiden Ln and Frost Rd is down to one lane alternating traffic due to a slide. Crews on the working on repairs. Estimated full reopening late September. Last Updated: 9/15/2023, 10:55 AM, Created: 7/23/2023, 4:28 PM
  - VT-125 -- Ripton:** TRAFFIC ALERT: VT-125 in Ripton near the Middlebury town line is down to one lane alternating traffic due to a slide. Crews on the working on repairs. Estimated full reopening mid-October. Last Updated: 9/15/2023, 10:53 AM, Created: 7/23/2023, 4:21 PM
  - VT-131 -- Cavendish:** Last 10 Openings sorted by Date Logged with Original Description
  - VT-131 -- Weatherfield:** TRAFFIC ALERT: VT-131 in Weatherfield at junction of VT-106 to Cavendish at junction of VT-103 is CLOSED due to flooding. Last Updated: 8/9/2023, 5:58 PM, Created: 7/10/2023, 9:59 AM
  - I-189 -- South Burlington:** TRAFFIC ALERT: I-189W near the Spear St. overpass (mile marker 1.115) will have a left lane closure starting at 9:00 a.m. for washout repair. Last Updated: 8/9/2023, 4:00 PM, Created: 8/8/2023, 8:00 AM
  - US-302 -- Barre City:** TRAFFIC ALERT: US-302 in Barre City between Second St and Fourth St is CLOSED for paving Tuesday 8/8 AM. Last Updated: 8/8/2023, 6:10 PM, Created: 7/10/2023, 6:03 PM
  - VT-126 -- Hanover:** Last update: 7/20/2023, 10:53 AM

The right side of the dashboard features a map showing the geographic distribution of these incidents across Vermont.

Questions

---





# Contact

Transportation Management Center (TMC)

24/7/365

[AOT.TMC@vermont.gov](mailto:AOT.TMC@vermont.gov)

Ryan Knapp, IT Section Chief

[Ryan.Knapp@vermont.gov](mailto:Ryan.Knapp@vermont.gov)

(802) 498-8109

Ian Kilburn, TMC Supervisor

[Ian.Kilburn@vermont.gov](mailto:Ian.Kilburn@vermont.gov)

(802) 760-0901