

# VEM Tropical Storm Henri Briefing

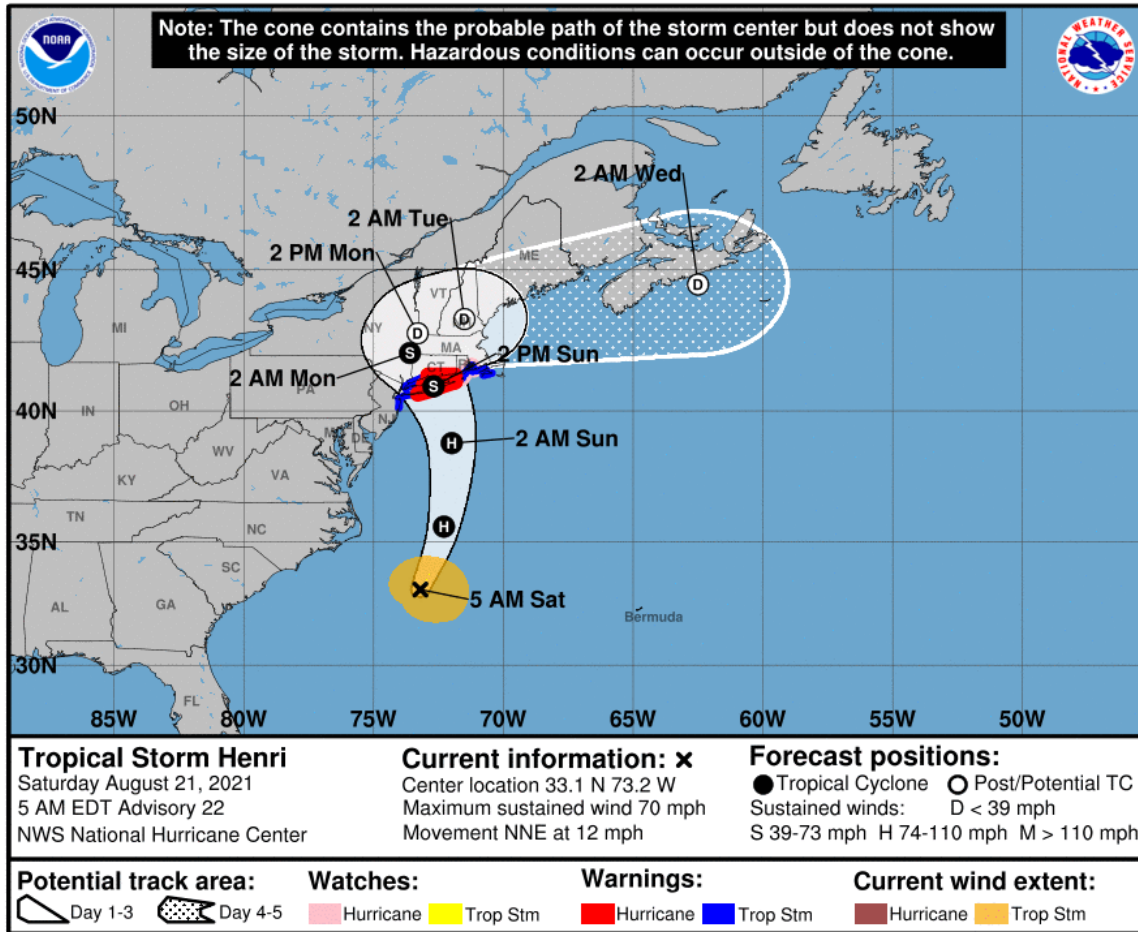
Decision Support Briefing  
Saturday, August 21<sup>st</sup>



# Overview

- ✓ Tropical Storm Henri is expected to move into southern New England late Sunday and slowly pivot across the region through Monday.
  - ✓ Possible impacts to Vermont wouldn't occur until late Sunday into Monday.
  - ✓ Current trends suggest heavy rainfall will be the primary threat. The highest rainfall totals of 1 to 2 inches over the higher elevations of the eastern slopes of central-southern Greens. Totals elsewhere will be 0.5 inch or less.
  - ✓ Wind impacts are not expected at this time.
  
- ✓ Ahead of Tropical Storm Henri, heat indices in the mid 90s are expected across western Franklin and Chittenden Counties of Vermont.
  - ✓ A Heat Advisory is in effect from noon through 7 PM today.

# Latest NHC Advisory



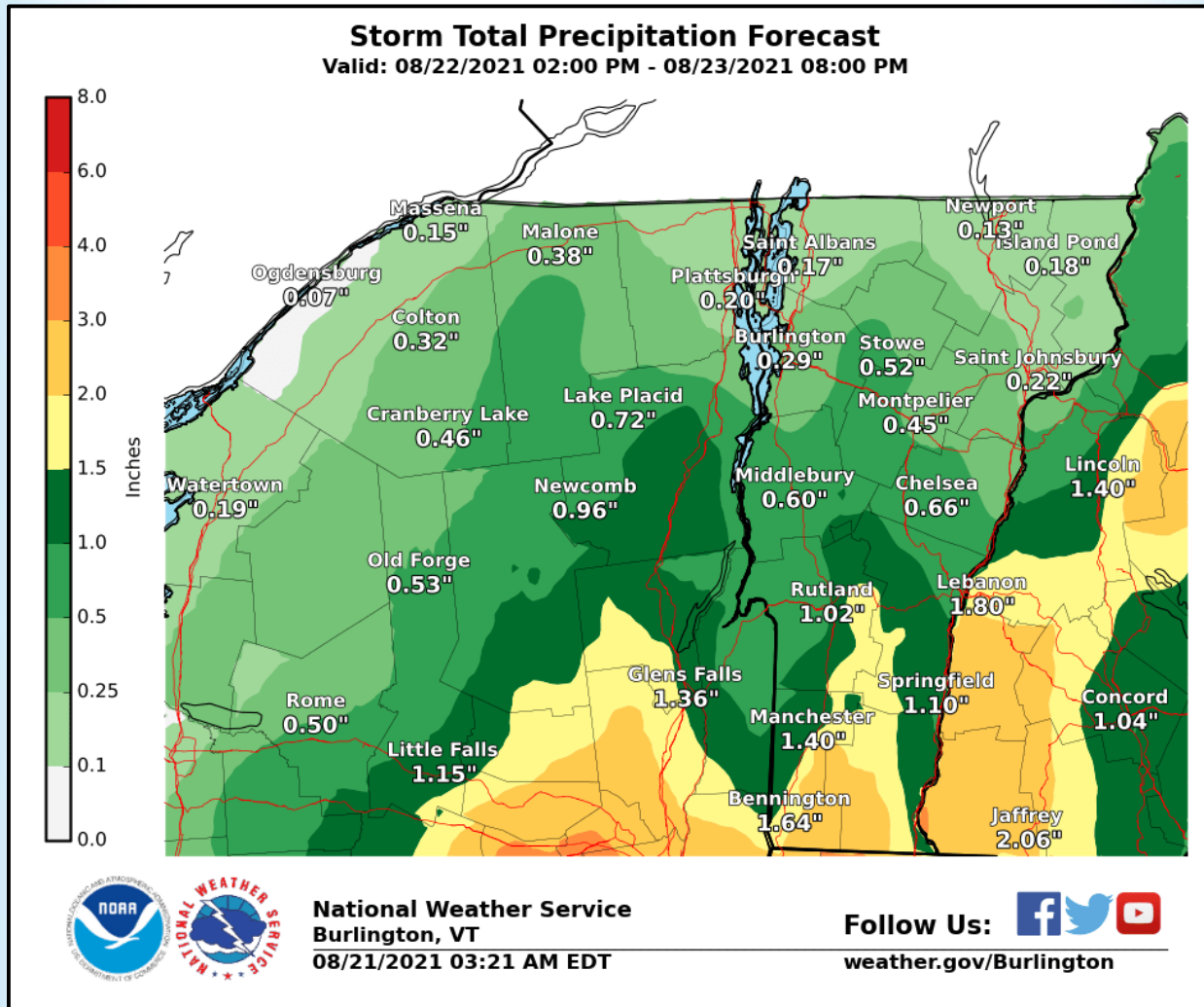
- ✓ Tropical Storm Henri is located about 525 miles south of Montauk, NY this evening.
- ✓ Henri is expected to make landfall near Long Island by Sunday afternoon.
- ✓ Impacts to portions of the North Country are most likely late Sunday into Monday in the form of possible heavy rainfall.

For more information, check our webpage with tropical information at <https://www.weather.gov/btv/tropical> and the National Hurricane Center at <https://www.nhc.noaa.gov/>

# Potential Wind Threat



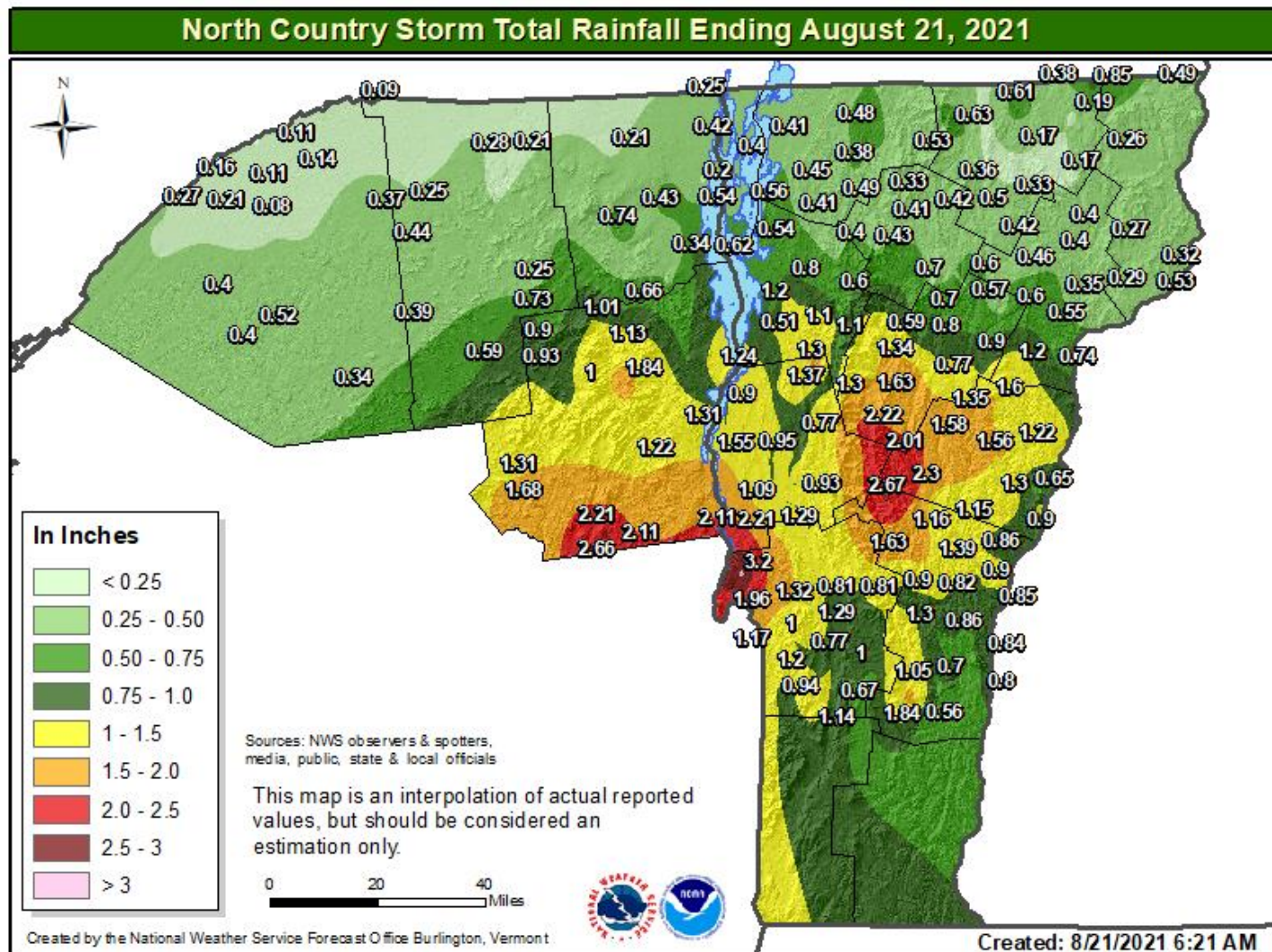
- Wind impacts are expected to be minimal across much of Vermont
- Greatest likelihood for tropical storm force winds ( $\geq 39$  mph) is across far southern Bennington and Windham Counties but still remains small



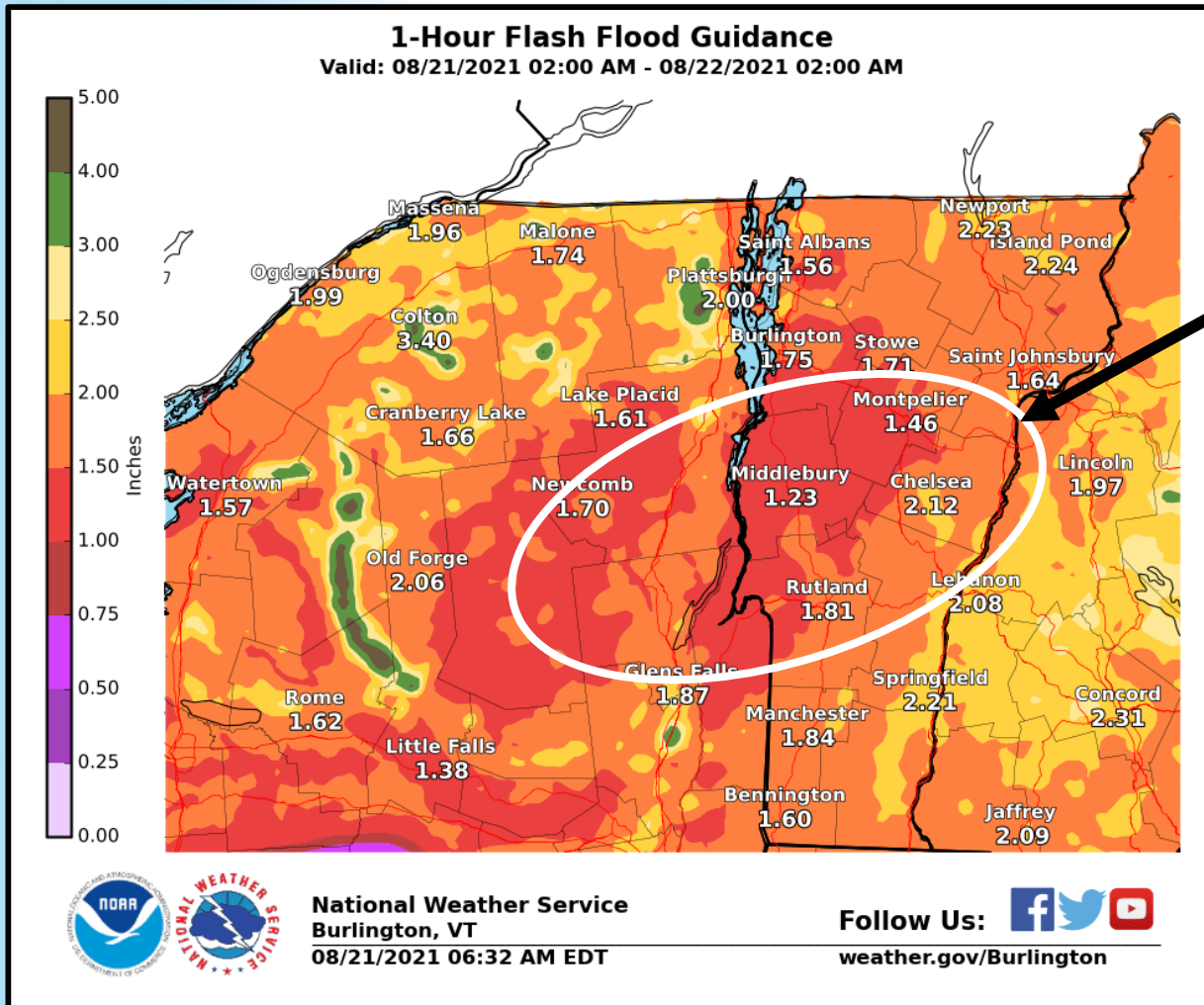
The heaviest rainfall is currently expected across higher elevations of the southern Greens and Adirondacks, with 1-2 inches possible through Monday.



# Observed Precipitation Since Thursday



# 1 Hour Flash Flood Guidance

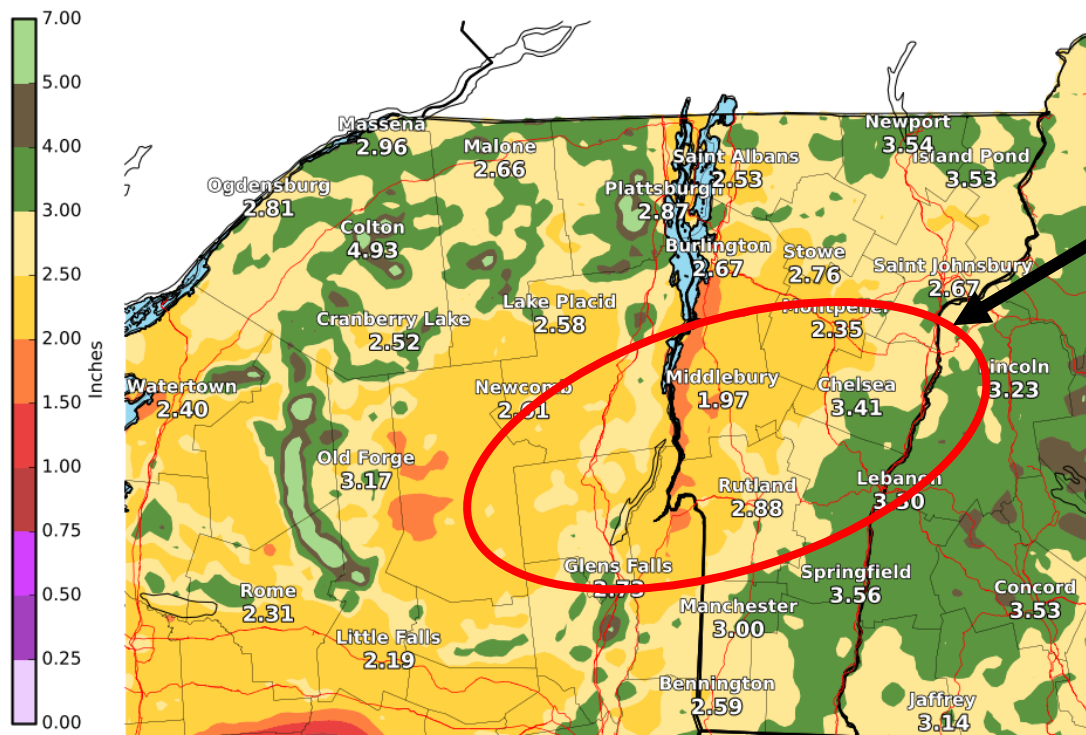


- Lowest 1 hour flash flood guidance
- Given recent rainfall, this area is potentially most sensitive to flooding

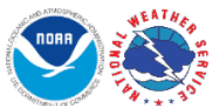
# 6 Hour Flash Flood Guidance

## 6-Hour Flash Flood Guidance

Valid: 08/21/2021 02:00 AM - 08/22/2021 02:00 AM



- Lowest 6 hour flash flood guidance
- Given recent rainfall, this area is potentially most sensitive to flooding



National Weather Service  
Burlington, VT  
08/21/2021 06:32 AM EDT

Follow Us:   
weather.gov/Burlington





# Tropical Storm Henri Possible Impacts

- ✓ Heavy rainfall *is possible* in association with Henri late Sunday through Monday, especially across central/southern Vermont. At this time, the highest precipitation amounts are expected over higher elevations of the central-southern Greens.
- ✓ We will be monitoring for potential river/flash flooding as the primary threats.
- ✓ 1 to 2 inches of rainfall is currently expected across the high terrain with roughly a half inch or less across the rest of the forecast area.
- ✓ At this time, the wind impacts appear minimal.
- ✓ Continue to monitor the latest forecasts regarding any shifts in track that would influence the axis of heaviest precipitation.

# Tropical Links

- National Hurricane Center
  - <https://www.nhc.noaa.gov/>
- BTV Tropical Weather Page
  - <https://www.weather.gov/btv/tropical>

# Flood Safety Tips

- NWS Flood Safety Tips and Resources
  - <https://www.weather.gov/safety/flood>

# Contact and Next Briefing Information

**Next Briefing:**  
*Sunday, August 22nd by 12 PM*  
*Monitor updated forecasts*



**Web:**  
<http://www.weather.gov/btv/>



**Phone (UNLISTED):**  
(802) 863-4279 or (802) 658-0150



**E-mail:**  
[nwsbtv.info@noaa.gov](mailto:nwsbtv.info@noaa.gov)



**Facebook:**  
<https://www.facebook.com/NWSBurlington>



**Twitter:**  
<https://twitter.com/NWSBurlington>



**YouTube:**  
<https://www.youtube.com/NWSBurlington>