

National Risk Index



October 30, 2023

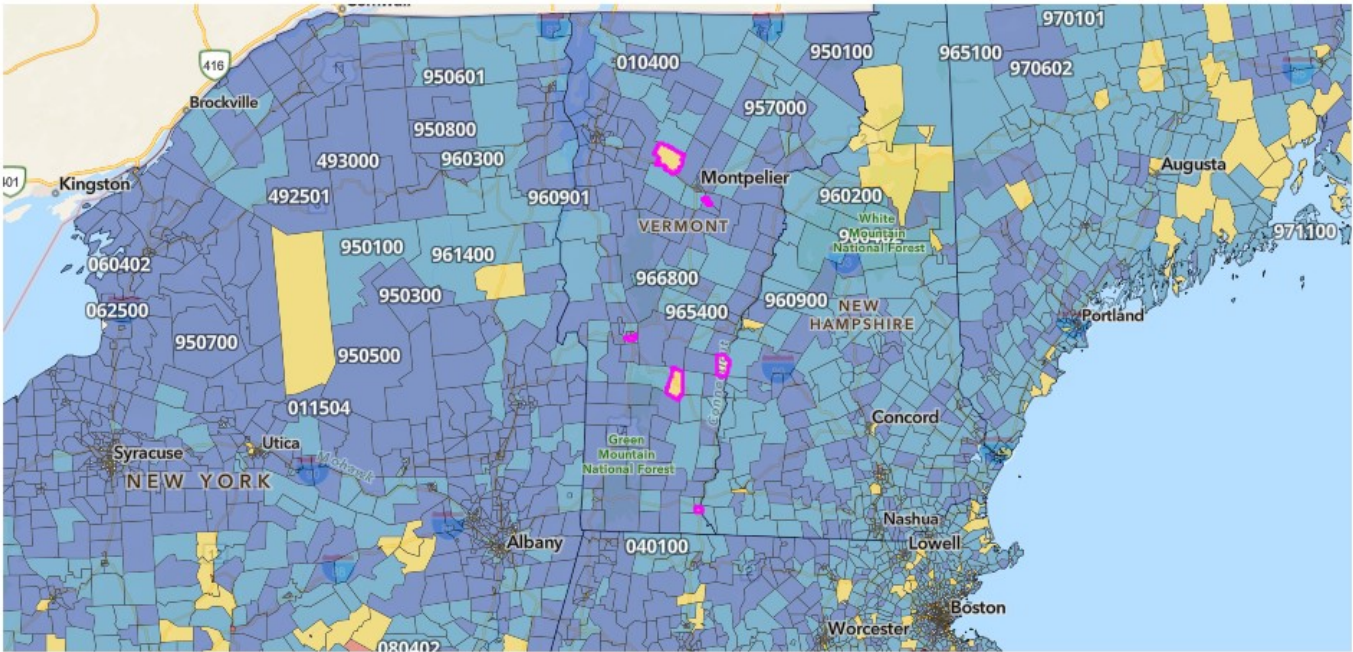
Risk Comparison Report

Use this report to determine how risk factors in selected communities compare to each other. Click a community name in any table below to open an individual risk profile report for that community and review its risk factors in more detail.

While reviewing this report, keep in mind that low risk is driven by lower loss due to natural hazards, lower social vulnerability, and higher community resilience.

For more information about the National Risk Index, its data, and how to interpret the information it provides, please review the **About the National Risk Index** and **How to Take Action** sections at the end of this report. Or, visit the National Risk Index website at hazards.fema.gov/nri/learn-more to access supporting documentation and links.

Risk Index



Risk Index Legend

- Very High
- Relatively High
- Relatively Moderate
- Relatively Low
- Very Low
- No Rating
- Not Applicable
- Insufficient Data

Rank	Community	State	Risk Index Rating	Risk Index Score	National Percentile
1	Census tract 50023955200	VT	Relatively Moderate	82.51	0 100
2	Census tract 50027966000	VT	Relatively Moderate	74.72	0 100
3	Census tract 50027966300	VT	Relatively Moderate	68.87	0 100
4	Census tract 50025968500	VT	Relatively Moderate	68.58	0 100

Rank	Community	State	Risk Index Rating	Risk Index Score	National Percentile
5	Census tract 50023954300	VT	Relatively Moderate	67.7	<div><div></div><div>0100</div></div>
6	Census tract 50021963300	VT	Relatively Moderate	66.21	<div><div></div><div>0100</div></div>

Rank	Community	State	EAL Value	Social Vulnerability	Community Resilience	CRF	Risk Value	Risk Index Score
1	Census tract 50023955200	VT	\$1,214,801	Relatively High	Very High	1.31	\$1,590,313	82.51
2	Census tract 50027966000	VT	\$910,917	Relatively High	Relatively Moderate	1.27	\$1,154,641	74.72
3	Census tract 50027966300	VT	\$727,672	Relatively High	Relatively Moderate	1.29	\$939,999	68.87
4	Census tract 50025968500	VT	\$675,302	Relatively High	Relatively Moderate	1.38	\$930,981	68.58
5	Census tract 50023954300	VT	\$833,401	Relatively Moderate	Very High	1.08	\$902,797	67.7
6	Census tract 50021963300	VT	\$620,565	Relatively High	Relatively High	1.39	\$860,918	66.21

Hazard Type Risk Index

Hazard type Risk Index scores are calculated using data for only a single hazard type, and reflect a community's relative risk for only that hazard type.

Avalanche

Rank	Community	State	Risk Index Rating	Risk Index Score	National Percentile
	Census tract 50021963300	VT	Not Applicable		
	Census tract 50023954300	VT	Not Applicable		
	Census tract 50023955200	VT	Not Applicable		
	Census tract 50025968500	VT	Not Applicable		
	Census tract 50027966000	VT	Not Applicable		
	Census tract 50027966300	VT	Not Applicable		







Rank	Community	State	EAL Value	Social Vulnerability	Community Resilience	CRF	Risk Value	Risk Index Score
	Census tract 50021963300	VT	N/A	Relatively High	Relatively High	1.39	N/A	N/A
	Census tract 50023954300	VT	N/A	Relatively Moderate	Very High	1.08	N/A	N/A
	Census tract 50023955200	VT	N/A	Relatively High	Very High	1.31	N/A	N/A
	Census tract 50025968500	VT	N/A	Relatively High	Relatively Moderate	1.38	N/A	N/A
	Census tract 50027966000	VT	N/A	Relatively High	Relatively Moderate	1.27	N/A	N/A
	Census tract 50027966300	VT	N/A	Relatively High	Relatively Moderate	1.29	N/A	N/A

Coastal Flooding

Rank	Community	State	Risk Index Rating	Risk Index Score	National Percentile
	Census tract 50021963300	VT	Not Applicable		
	Census tract 50023954300	VT	Not Applicable		
	Census tract 50023955200	VT	Not Applicable		
	Census tract 50025968500	VT	Not Applicable		
	Census tract 50027966000	VT	Not Applicable		
	Census tract 50027966300	VT	Not Applicable		

Rank	Community	State	EAL Value	Social Vulnerability	Community Resilience	CRF	Risk Value	Risk Index Score
	Census tract 50021963300	VT	N/A	Relatively High	Relatively High	1.39	N/A	N/A
	Census tract 50023954300	VT	N/A	Relatively Moderate	Very High	1.08	N/A	N/A
	Census tract 50023955200	VT	N/A	Relatively High	Very High	1.31	N/A	N/A
	Census tract 50025968500	VT	N/A	Relatively High	Relatively Moderate	1.38	N/A	N/A
	Census tract 50027966000	VT	N/A	Relatively High	Relatively Moderate	1.27	N/A	N/A
	Census tract 50027966300	VT	N/A	Relatively High	Relatively Moderate	1.29	N/A	N/A

Cold Wave

Rank	Community	State	Risk Index Rating	Risk Index Score	National Percentile	
1	Census tract 50025968500	VT	Relatively Moderate	83.46	0	 100
2	Census tract 50023954300	VT	Relatively Low	69.76	0	 100
3	Census tract 50023955200	VT	Relatively Low	68.74	0	 100
4	Census tract 50021963300	VT	Relatively Low	66.32	0	 100
5	Census tract 50027966000	VT	Relatively Low	59.94	0	 100
6	Census tract 50027966300	VT	Relatively Low	55.11	0	 100



Rank	Community	State	EAL Value	Social Vulnerability	Community Resilience	CRF	Risk Value	Risk Index Score
1	Census tract 50025968500	VT	\$12,155	Relatively High	Relatively Moderate	1.38	\$16,757	83.46
2	Census tract 50023954300	VT	\$5,370	Relatively Moderate	Very High	1.08	\$5,817	69.76
3	Census tract 50023955200	VT	\$4,117	Relatively High	Very High	1.31	\$5,390	68.74
4	Census tract 50021963300	VT	\$3,251	Relatively High	Relatively High	1.39	\$4,510	66.32
5	Census tract 50027966000	VT	\$2,166	Relatively High	Relatively Moderate	1.27	\$2,746	59.94
6	Census tract 50027966300	VT	\$1,355	Relatively High	Relatively Moderate	1.29	\$1,751	55.11

Drought

Rank	Community	State	Risk Index Rating	Risk Index Score	National Percentile	
	Census tract 50021963300	VT	No Rating	0	0	<div><div></div></div> 100
	Census tract 50023954300	VT	No Rating	0	0	<div><div></div></div> 100
	Census tract 50023955200	VT	No Rating	0	0	<div><div></div></div> 100
	Census tract 50025968500	VT	No Rating	0	0	<div><div></div></div> 100
	Census tract 50027966000	VT	No Rating	0	0	<div><div></div></div> 100
	Census tract 50027966300	VT	No Rating	0	0	<div><div></div></div> 100







Rank	Community	State	EAL Value	Social Vulnerability	Community Resilience	CRF	Risk Value	Risk Index Score
	Census tract 50021963300	VT	\$0	Relatively High	Relatively High	1.39	\$0	0
	Census tract 50023954300	VT	\$0	Relatively Moderate	Very High	1.08	\$0	0
	Census tract 50023955200	VT	\$0	Relatively High	Very High	1.31	\$0	0
	Census tract 50025968500	VT	\$0	Relatively High	Relatively Moderate	1.38	\$0	0
	Census tract 50027966000	VT	\$0	Relatively High	Relatively Moderate	1.27	\$0	0
	Census tract 50027966300	VT	\$0	Relatively High	Relatively Moderate	1.29	\$0	0

Earthquake

Rank	Community	State	Risk Index Rating	Risk Index Score	National Percentile	
1	Census tract 50021963300	VT	Relatively Low	69.59	0	 100
2	Census tract 50023954300	VT	Relatively Low	58.34	0	 100
3	Census tract 50023955200	VT	Relatively Low	57.55	0	 100
4	Census tract 50025968500	VT	Relatively Low	56.56	0	 100
5	Census tract 50027966300	VT	Very Low	53.54	0	 100
6	Census tract 50027966000	VT	Very Low	44.06	0	 100

Rank	Community	State	EAL Value	Social Vulnerability	Community Resilience	CRF	Risk Value	Risk Index Score
1	Census tract 50021963300	VT	\$28,723	Relatively High	Relatively High	1.39	\$39,848	69.59
2	Census tract 50023954300	VT	\$17,542	Relatively Moderate	Very High	1.08	\$19,003	58.34
3	Census tract 50023955200	VT	\$13,939	Relatively High	Very High	1.31	\$18,248	57.55
4	Census tract 50025968500	VT	\$12,573	Relatively High	Relatively Moderate	1.38	\$17,334	56.56
5	Census tract 50027966300	VT	\$11,577	Relatively High	Relatively Moderate	1.29	\$14,955	53.54
6	Census tract 50027966000	VT	\$7,562	Relatively High	Relatively Moderate	1.27	\$9,585	44.06

Hail

Rank	Community	State	Risk Index Rating	Risk Index Score	National Percentile	
1	Census tract 50025968500	VT	Relatively Low	62.77	0	
2	Census tract 50021963300	VT	Relatively Low	59.89	0	
3	Census tract 50023955200	VT	Relatively Low	55	0	
4	Census tract 50023954300	VT	Relatively Low	54.05	0	
5	Census tract 50027966000	VT	Relatively Low	49.66	0	
6	Census tract 50027966300	VT	Relatively Low	48.8	0	

Rank	Community	State	EAL Value	Social Vulnerability	Community Resilience	CRF	Risk Value	Risk Index Score
1	Census tract 50025968500	VT	\$3,255	Relatively High	Relatively Moderate	1.38	\$4,487	62.77
2	Census tract 50021963300	VT	\$2,560	Relatively High	Relatively High	1.39	\$3,551	59.89
3	Census tract 50023955200	VT	\$1,931	Relatively High	Very High	1.31	\$2,528	55
4	Census tract 50023954300	VT	\$2,190	Relatively Moderate	Very High	1.08	\$2,373	54.05
5	Census tract 50027966000	VT	\$1,402	Relatively High	Relatively Moderate	1.27	\$1,777	49.66
6	Census tract 50027966300	VT	\$1,305	Relatively High	Relatively Moderate	1.29	\$1,685	48.8

Heat Wave

Rank	Community	State	Risk Index Rating	Risk Index Score	National Percentile	
1	Census tract 50021963300	VT	Relatively Moderate	62.6	0	 100
2	Census tract 50025968500	VT	Relatively Low	30.55	0	 100
3	Census tract 50027966000	VT	Relatively Low	27.63	0	 100
4	Census tract 50027966300	VT	Relatively Low	23.24	0	 100
	Census tract 50023954300	VT	No Rating	0	0	 100
	Census tract 50023955200	VT	No Rating	0	0	 100

Rank	Community	State	EAL Value	Social Vulnerability	Community Resilience	CRF	Risk Value	Risk Index Score
1	Census tract 50021963300	VT	\$12,543	Relatively High	Relatively High	1.39	\$17,401	62.6
2	Census tract 50025968500	VT	\$1,849	Relatively High	Relatively Moderate	1.38	\$2,549	30.55
3	Census tract 50027966000	VT	\$1,533	Relatively High	Relatively Moderate	1.27	\$1,944	27.63
4	Census tract 50027966300	VT	\$933	Relatively High	Relatively Moderate	1.29	\$1,205	23.24
	Census tract 50023954300	VT	\$0	Relatively Moderate	Very High	1.08	\$0	0
	Census tract 50023955200	VT	\$0	Relatively High	Very High	1.31	\$0	0

Hurricane

Rank	Community	State	Risk Index Rating	Risk Index Score	National Percentile	
1	Census tract 50025968500	VT	Relatively Moderate	80.96	0	<div><div></div></div> 100
2	Census tract 50021963300	VT	Relatively Moderate	73.57	0	<div><div></div></div> 100
3	Census tract 50027966300	VT	Relatively Moderate	70.68	0	<div><div></div></div> 100
4	Census tract 50023955200	VT	Relatively Low	63.61	0	<div><div></div></div> 100
5	Census tract 50027966000	VT	Relatively Low	62.81	0	<div><div></div></div> 100
6	Census tract 50023954300	VT	Relatively Low	61.86	0	<div><div></div></div> 100

Rank	Community	State	EAL Value	Social Vulnerability	Community Resilience	CRF	Risk Value	Risk Index Score
1	Census tract 50025968500	VT	\$276,472	Relatively High	Relatively Moderate	1.38	\$381,148	80.96
2	Census tract 50021963300	VT	\$151,457	Relatively High	Relatively High	1.39	\$210,119	73.57
3	Census tract 50027966300	VT	\$135,362	Relatively High	Relatively Moderate	1.29	\$174,859	70.68
4	Census tract 50023955200	VT	\$86,478	Relatively High	Very High	1.31	\$113,210	63.61
5	Census tract 50027966000	VT	\$84,099	Relatively High	Relatively Moderate	1.27	\$106,601	62.81
6	Census tract 50023954300	VT	\$91,800	Relatively Moderate	Very High	1.08	\$99,444	61.86

Ice Storm

Rank	Community	State	Risk Index Rating	Risk Index Score	National Percentile	
1	Census tract 50025968500	VT	Relatively High	97.33	0	<div><div></div></div> 100
2	Census tract 50023954300	VT	Relatively Moderate	77.05	0	<div><div></div></div> 100
3	Census tract 50023955200	VT	Relatively Moderate	72.07	0	<div><div></div></div> 100
4	Census tract 50021963300	VT	Relatively Low	58.18	0	<div><div></div></div> 100
5	Census tract 50027966300	VT	Very Low	27.47	0	<div><div></div></div> 100
6	Census tract 50027966000	VT	Very Low	25.86	0	<div><div></div></div> 100

Rank	Community	State	EAL Value	Social Vulnerability	Community Resilience	CRF	Risk Value	Risk Index Score
1	Census tract 50025968500	VT	\$64,853	Relatively High	Relatively Moderate	1.38	\$89,407	97.33
2	Census tract 50023954300	VT	\$9,417	Relatively Moderate	Very High	1.08	\$10,201	77.05
3	Census tract 50023955200	VT	\$5,645	Relatively High	Very High	1.31	\$7,390	72.07
4	Census tract 50021963300	VT	\$2,639	Relatively High	Relatively High	1.39	\$3,661	58.18
5	Census tract 50027966300	VT	\$802	Relatively High	Relatively Moderate	1.29	\$1,036	27.47
6	Census tract 50027966000	VT	\$755	Relatively High	Relatively Moderate	1.27	\$956	25.86

Landslide

Rank	Community	State	Risk Index Rating	Risk Index Score	National Percentile	
1	Census tract 50023955200	VT	Very High	99.86	0	<div><div></div></div> 100
2	Census tract 50027966000	VT	Very High	99.57	0	<div><div></div></div> 100
3	Census tract 50025968500	VT	Relatively High	98.36	0	<div><div></div></div> 100
4	Census tract 50023954300	VT	Relatively High	97.91	0	<div><div></div></div> 100
5	Census tract 50027966300	VT	Relatively High	95.92	0	<div><div></div></div> 100
6	Census tract 50021963300	VT	Relatively High	95.38	0	<div><div></div></div> 100

Rank	Community	State	EAL Value	Social Vulnerability	Community Resilience	CRF	Risk Value	Risk Index Score
1	Census tract 50023955200	VT	\$186,060	Relatively High	Very High	1.31	\$243,574	99.86
2	Census tract 50027966000	VT	\$75,801	Relatively High	Relatively Moderate	1.27	\$96,083	99.57
3	Census tract 50025968500	VT	\$15,012	Relatively High	Relatively Moderate	1.38	\$20,696	98.36
4	Census tract 50023954300	VT	\$15,342	Relatively Moderate	Very High	1.08	\$16,619	97.91
5	Census tract 50027966300	VT	\$7,757	Relatively High	Relatively Moderate	1.29	\$10,020	95.92
6	Census tract 50021963300	VT	\$6,598	Relatively High	Relatively High	1.39	\$9,154	95.38

Lightning

Rank	Community	State	Risk Index Rating	Risk Index Score	National Percentile	
1	Census tract 50025968500	VT	Very High	98.54	0	<div><div></div></div> 100
2	Census tract 50023954300	VT	Relatively High	90.77	0	<div><div></div></div> 100
3	Census tract 50023955200	VT	Relatively High	89.09	0	<div><div></div></div> 100
4	Census tract 50027966000	VT	Relatively High	85.29	0	<div><div></div></div> 100
5	Census tract 50027966300	VT	Relatively Moderate	73.23	0	<div><div></div></div> 100
6	Census tract 50021963300	VT	Relatively Moderate	55.03	0	<div><div></div></div> 100

Rank	Community	State	EAL Value	Social Vulnerability	Community Resilience	CRF	Risk Value	Risk Index Score
1	Census tract 50025968500	VT	\$46,846	Relatively High	Relatively Moderate	1.38	\$64,582	98.54
2	Census tract 50023954300	VT	\$26,699	Relatively Moderate	Very High	1.08	\$28,922	90.77
3	Census tract 50023955200	VT	\$20,125	Relatively High	Very High	1.31	\$26,345	89.09
4	Census tract 50027966000	VT	\$17,235	Relatively High	Relatively Moderate	1.27	\$21,847	85.29
5	Census tract 50027966300	VT	\$10,436	Relatively High	Relatively Moderate	1.29	\$13,482	73.23
6	Census tract 50021963300	VT	\$5,188	Relatively High	Relatively High	1.39	\$7,197	55.03

Riverine Flooding

Rank	Community	State	Risk Index Rating	Risk Index Score	National Percentile	
1	Census tract 50023955200	VT	Very High	98.58	0	<div><div></div></div> 100
2	Census tract 50027966000	VT	Relatively High	98.09	0	<div><div></div></div> 100
3	Census tract 50023954300	VT	Relatively High	97.52	0	<div><div></div></div> 100
4	Census tract 50027966300	VT	Relatively High	97.44	0	<div><div></div></div> 100
5	Census tract 50021963300	VT	Relatively High	96.33	0	<div><div></div></div> 100
6	Census tract 50025968500	VT	Relatively Moderate	88.1	0	<div><div></div></div> 100

Rank	Community	State	EAL Value	Social Vulnerability	Community Resilience	CRF	Risk Value	Risk Index Score
1	Census tract 50023955200	VT	\$871,824	Relatively High	Very High	1.31	\$1,141,317	98.58
2	Census tract 50027966000	VT	\$690,834	Relatively High	Relatively Moderate	1.27	\$875,672	98.09
3	Census tract 50023954300	VT	\$632,446	Relatively Moderate	Very High	1.08	\$685,108	97.52
4	Census tract 50027966300	VT	\$513,209	Relatively High	Relatively Moderate	1.29	\$662,957	97.44
5	Census tract 50021963300	VT	\$349,542	Relatively High	Relatively High	1.39	\$484,925	96.33
6	Census tract 50025968500	VT	\$99,630	Relatively High	Relatively Moderate	1.38	\$137,352	88.1

Strong Wind

Rank	Community	State	Risk Index Rating	Risk Index Score	National Percentile	
1	Census tract 50025968500	VT	Relatively Moderate	78.26	0	<div><div></div></div> 100
2	Census tract 50021963300	VT	Relatively Moderate	65.96	0	<div><div></div></div> 100
3	Census tract 50027966300	VT	Relatively Low	43.36	0	<div><div></div></div> 100
4	Census tract 50023954300	VT	Relatively Low	39.44	0	<div><div></div></div> 100
5	Census tract 50023955200	VT	Relatively Low	38.13	0	<div><div></div></div> 100
6	Census tract 50027966000	VT	Relatively Low	32.21	0	<div><div></div></div> 100

Rank	Community	State	EAL Value	Social Vulnerability	Community Resilience	CRF	Risk Value	Risk Index Score
1	Census tract 50025968500	VT	\$26,599	Relatively High	Relatively Moderate	1.38	\$36,670	78.26
2	Census tract 50021963300	VT	\$15,250	Relatively High	Relatively High	1.39	\$21,157	65.96
3	Census tract 50027966300	VT	\$5,658	Relatively High	Relatively Moderate	1.29	\$7,309	43.36
4	Census tract 50023954300	VT	\$5,422	Relatively Moderate	Very High	1.08	\$5,873	39.44
5	Census tract 50023955200	VT	\$4,172	Relatively High	Very High	1.31	\$5,461	38.13
6	Census tract 50027966000	VT	\$2,966	Relatively High	Relatively Moderate	1.27	\$3,760	32.21

Tornado

Rank	Community	State	Risk Index Rating	Risk Index Score	National Percentile	
1	Census tract 50025968500	VT	Relatively Moderate	69.07	0	<div><div></div></div> 100
2	Census tract 50021963300	VT	Relatively Low	46.11	0	<div><div></div></div> 100
3	Census tract 50027966300	VT	Relatively Low	43.59	0	<div><div></div></div> 100
4	Census tract 50027966000	VT	Relatively Low	36.82	0	<div><div></div></div> 100
5	Census tract 50023955200	VT	Very Low	27.23	0	<div><div></div></div> 100
6	Census tract 50023954300	VT	Very Low	23.41	0	<div><div></div></div> 100

Rank	Community	State	EAL Value	Social Vulnerability	Community Resilience	CRF	Risk Value	Risk Index Score
1	Census tract 50025968500	VT	\$111,128	Relatively High	Relatively Moderate	1.38	\$153,203	69.07
2	Census tract 50021963300	VT	\$34,699	Relatively High	Relatively High	1.39	\$48,139	46.11
3	Census tract 50027966300	VT	\$32,548	Relatively High	Relatively Moderate	1.29	\$42,045	43.59
4	Census tract 50027966000	VT	\$21,962	Relatively High	Relatively Moderate	1.27	\$27,839	36.82
5	Census tract 50023955200	VT	\$10,300	Relatively High	Very High	1.31	\$13,484	27.23
6	Census tract 50023954300	VT	\$9,566	Relatively Moderate	Very High	1.08	\$10,362	23.41

Tsunami

Rank	Community	State	Risk Index Rating	Risk Index Score	National Percentile
	Census tract 50021963300	VT	Not Applicable		
	Census tract 50023954300	VT	Not Applicable		
	Census tract 50023955200	VT	Not Applicable		
	Census tract 50025968500	VT	Not Applicable		
	Census tract 50027966000	VT	Not Applicable		
	Census tract 50027966300	VT	Not Applicable		






Rank	Community	State	EAL Value	Social Vulnerability	Community Resilience	CRF	Risk Value	Risk Index Score
	Census tract 50021963300	VT	N/A	Relatively High	Relatively High	1.39	N/A	N/A
	Census tract 50023954300	VT	N/A	Relatively Moderate	Very High	1.08	N/A	N/A
	Census tract 50023955200	VT	N/A	Relatively High	Very High	1.31	N/A	N/A
	Census tract 50025968500	VT	N/A	Relatively High	Relatively Moderate	1.38	N/A	N/A
	Census tract 50027966000	VT	N/A	Relatively High	Relatively Moderate	1.27	N/A	N/A
	Census tract 50027966300	VT	N/A	Relatively High	Relatively Moderate	1.29	N/A	N/A

Volcanic Activity

Rank	Community	State	Risk Index Rating	Risk Index Score	National Percentile
	Census tract 50021963300	VT	Not Applicable		
	Census tract 50023954300	VT	Not Applicable		
	Census tract 50023955200	VT	Not Applicable		
	Census tract 50025968500	VT	Not Applicable		
	Census tract 50027966000	VT	Not Applicable		
	Census tract 50027966300	VT	Not Applicable		

Rank	Community	State	EAL Value	Social Vulnerability	Community Resilience	CRF	Risk Value	Risk Index Score
	Census tract 50021963300	VT	N/A	Relatively High	Relatively High	1.39	N/A	N/A
	Census tract 50023954300	VT	N/A	Relatively Moderate	Very High	1.08	N/A	N/A
	Census tract 50023955200	VT	N/A	Relatively High	Very High	1.31	N/A	N/A
	Census tract 50025968500	VT	N/A	Relatively High	Relatively Moderate	1.38	N/A	N/A
	Census tract 50027966000	VT	N/A	Relatively High	Relatively Moderate	1.27	N/A	N/A
	Census tract 50027966300	VT	N/A	Relatively High	Relatively Moderate	1.29	N/A	N/A

Wildfire

Rank	Community	State	Risk Index Rating	Risk Index Score	National Percentile	
1	Census tract 50023954300	VT	Relatively Low	79.02	0	
2	Census tract 50027966300	VT	Relatively Low	78.4	0	
3	Census tract 50027966000	VT	Relatively Low	71.3	0	
4	Census tract 50021963300	VT	Relatively Low	70.6	0	
5	Census tract 50025968500	VT	Relatively Low	64.72	0	
6	Census tract 50023955200	VT	Relatively Low	63.78	0	

Rank	Community	State	EAL Value	Social Vulnerability	Community Resilience	CRF	Risk Value	Risk Index Score
1	Census tract 50023954300	VT	\$3,462	Relatively Moderate	Very High	1.08	\$3,750	79.02
2	Census tract 50027966300	VT	\$2,606	Relatively High	Relatively Moderate	1.29	\$3,366	78.4
3	Census tract 50027966000	VT	\$1,232	Relatively High	Relatively Moderate	1.27	\$1,562	71.3
4	Census tract 50021963300	VT	\$1,072	Relatively High	Relatively High	1.39	\$1,488	70.6
5	Census tract 50025968500	VT	\$710	Relatively High	Relatively Moderate	1.38	\$979	64.72
6	Census tract 50023955200	VT	\$702	Relatively High	Very High	1.31	\$919	63.78

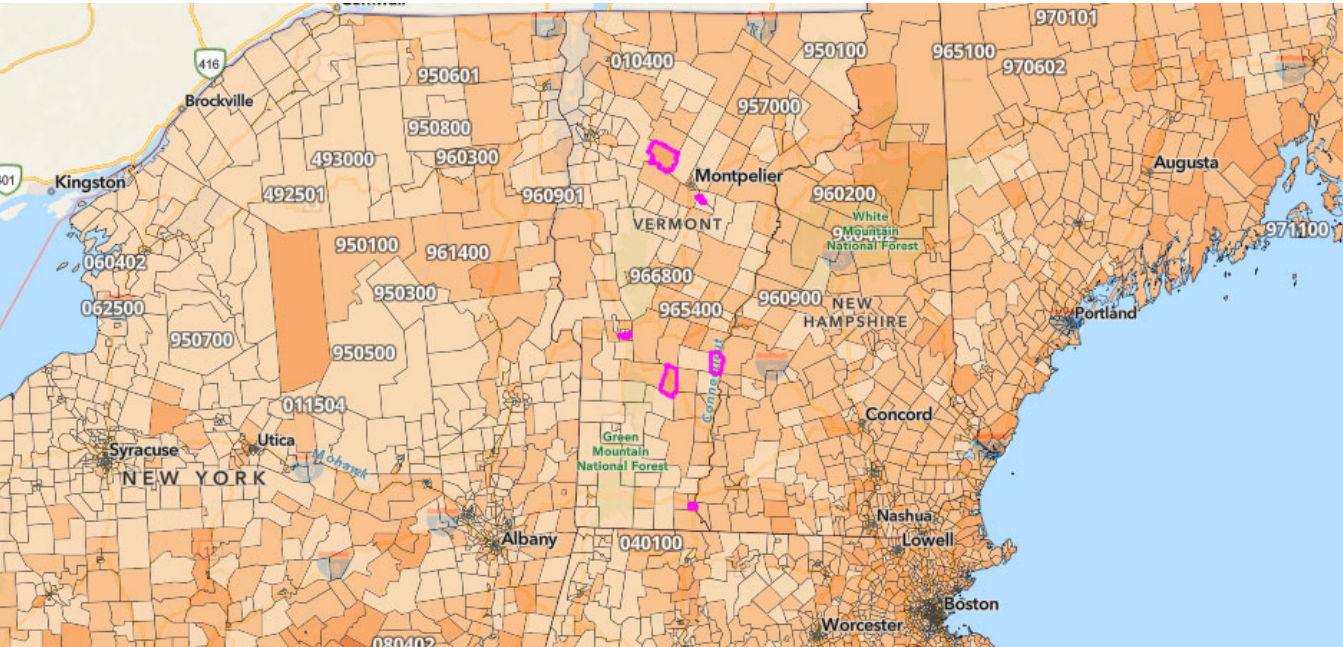
Winter Weather

Rank	Community	State	Risk Index Rating	Risk Index Score	National Percentile	
1	Census tract 50023954300	VT	Relatively High	90.63	0	<div><div></div></div> 100
2	Census tract 50023955200	VT	Relatively High	88.3	0	<div><div></div></div> 100
3	Census tract 50021963300	VT	Relatively Moderate	85.21	0	<div><div></div></div> 100
4	Census tract 50025968500	VT	Relatively Moderate	76.89	0	<div><div></div></div> 100
5	Census tract 50027966300	VT	Relatively Moderate	75.26	0	<div><div></div></div> 100
6	Census tract 50027966000	VT	Relatively Moderate	71.14	0	<div><div></div></div> 100

Rank	Community	State	EAL Value	Social Vulnerability	Community Resilience	CRF	Risk Value	Risk Index Score
1	Census tract 50023954300	VT	\$14,146	Relatively Moderate	Very High	1.08	\$15,324	90.63
2	Census tract 50023955200	VT	\$9,508	Relatively High	Very High	1.31	\$12,447	88.3
3	Census tract 50021963300	VT	\$7,041	Relatively High	Relatively High	1.39	\$9,768	85.21
4	Census tract 50025968500	VT	\$4,220	Relatively High	Relatively Moderate	1.38	\$5,818	76.89
5	Census tract 50027966300	VT	\$4,125	Relatively High	Relatively Moderate	1.29	\$5,329	75.26
6	Census tract 50027966000	VT	\$3,368	Relatively High	Relatively Moderate	1.27	\$4,270	71.14

Expected Annual Loss

Expected Annual Loss measures the expected loss each year due to natural hazards.



Expected Annual Loss Legend

- Very High
- Relatively High
- Relatively Moderate
- Relatively Low
- Very Low
- No Expected Annual Losses
- Not Applicable
- Insufficient Data

Rank	Community	State	EAL Value	Score
1	Census tract 50023955200	VT	\$1,214,801	79.74
2	Census tract 50027966000	VT	\$910,917	71.76
3	Census tract 50023954300	VT	\$833,401	69.08
4	Census tract 50027966300	VT	\$727,672	64.55
5	Census tract 50025968500	VT	\$675,302	61.85
6	Census tract 50021963300	VT	\$620,565	58.84

Expected Annual Loss for Hazard Types

Expected Annual Loss scores for hazard types are calculated using data for only a single hazard type, and reflect a community's relative expected annual loss for only that hazard type.

Avalanche

Rank	Community	State	EAL Value	Score
	Census tract 50021963300	VT	N/A	--
	Census tract 50023954300	VT	N/A	--
	Census tract 50023955200	VT	N/A	--
	Census tract 50025968500	VT	N/A	--
	Census tract 50027966000	VT	N/A	--
	Census tract 50027966300	VT	N/A	--

Coastal Flooding

Rank	Community	State	EAL Value	Score
	Census tract 50021963300	VT	N/A	--
	Census tract 50023954300	VT	N/A	--
	Census tract 50023955200	VT	N/A	--
	Census tract 50025968500	VT	N/A	--
	Census tract 50027966000	VT	N/A	--
	Census tract 50027966300	VT	N/A	--

Cold Wave

Rank	Community	State	EAL Value	Score
1	Census tract 50025968500	VT	\$12,155	80.7
2	Census tract 50023954300	VT	\$5,370	70.2
3	Census tract 50023955200	VT	\$4,117	66.8
4	Census tract 50021963300	VT	\$3,251	63.8
5	Census tract 50027966000	VT	\$2,166	58.7
6	Census tract 50027966300	VT	\$1,355	53.9

Drought

Rank	Community	State	EAL Value	Score
	Census tract 50021963300	VT	\$0	0.0
	Census tract 50023954300	VT	\$0	0.0
	Census tract 50023955200	VT	\$0	0.0
	Census tract 50025968500	VT	\$0	0.0
	Census tract 50027966000	VT	\$0	0.0
	Census tract 50027966300	VT	\$0	0.0

Earthquake

Rank	Community	State	EAL Value	Score
1	Census tract 50021963300	VT	\$28,723	66.1
2	Census tract 50023954300	VT	\$17,542	58.5
3	Census tract 50023955200	VT	\$13,939	53.9
4	Census tract 50025968500	VT	\$12,573	51.7
5	Census tract 50027966300	VT	\$11,577	50.0
6	Census tract 50027966000	VT	\$7,562	40.3

Hail

Rank	Community	State	EAL Value	Score
1	Census tract 50025968500	VT	\$3,255	60.5
2	Census tract 50021963300	VT	\$2,560	57.2
3	Census tract 50023954300	VT	\$2,190	54.9
4	Census tract 50023955200	VT	\$1,931	53.0
5	Census tract 50027966000	VT	\$1,402	48.0
6	Census tract 50027966300	VT	\$1,305	46.9

Heat Wave

Rank	Community	State	EAL Value	Score
1	Census tract 50021963300	VT	\$12,543	58.7
2	Census tract 50025968500	VT	\$1,849	28.7
3	Census tract 50027966000	VT	\$1,533	27.0
4	Census tract 50027966300	VT	\$933	22.9
	Census tract 50023954300	VT	\$0	0.0
	Census tract 50023955200	VT	\$0	0.0

Hurricane

Rank	Community	State	EAL Value	Score
1	Census tract 50025968500	VT	\$276,472	76.9
2	Census tract 50021963300	VT	\$151,457	69.1
3	Census tract 50027966300	VT	\$135,362	67.5
4	Census tract 50023954300	VT	\$91,800	61.8
5	Census tract 50023955200	VT	\$86,478	61.0
6	Census tract 50027966000	VT	\$84,099	60.6

Ice Storm

Rank	Community	State	EAL Value	Score
1	Census tract 50025968500	VT	\$64,853	96.4
2	Census tract 50023954300	VT	\$9,417	77.4
3	Census tract 50023955200	VT	\$5,645	68.9
4	Census tract 50021963300	VT	\$2,639	52.3
5	Census tract 50027966300	VT	\$802	24.5
6	Census tract 50027966000	VT	\$755	23.3

Landslide

Rank	Community	State	EAL Value	Score
1	Census tract 50023955200	VT	\$186,060	99.9
2	Census tract 50027966000	VT	\$75,801	99.5
3	Census tract 50023954300	VT	\$15,342	98.1
4	Census tract 50025968500	VT	\$15,012	98.0
5	Census tract 50027966300	VT	\$7,757	95.2
6	Census tract 50021963300	VT	\$6,598	93.9

Lightning

Rank	Community	State	EAL Value	Score
1	Census tract 50025968500	VT	\$46,846	98.1
2	Census tract 50023954300	VT	\$26,699	92.2
3	Census tract 50023955200	VT	\$20,125	86.7
4	Census tract 50027966000	VT	\$17,235	83.1
5	Census tract 50027966300	VT	\$10,436	68.8
6	Census tract 50021963300	VT	\$5,188	47.7

Riverine Flooding

Rank	Community	State	EAL Value	Score
1	Census tract 50023955200	VT	\$871,824	98.4
2	Census tract 50027966000	VT	\$690,834	97.9
3	Census tract 50023954300	VT	\$632,446	97.7
4	Census tract 50027966300	VT	\$513,209	97.2
5	Census tract 50021963300	VT	\$349,542	95.7
6	Census tract 50025968500	VT	\$99,630	86.3

Strong Wind

Rank	Community	State	EAL Value	Score
1	Census tract 50025968500	VT	\$26,599	74.1
2	Census tract 50021963300	VT	\$15,250	61.3
3	Census tract 50027966300	VT	\$5,658	40.9
4	Census tract 50023954300	VT	\$5,422	40.2
5	Census tract 50023955200	VT	\$4,172	36.1
6	Census tract 50027966000	VT	\$2,966	31.1

Tornado

Rank	Community	State	EAL Value	Score
1	Census tract 50025968500	VT	\$111,128	64.4
2	Census tract 50021963300	VT	\$34,699	42.6
3	Census tract 50027966300	VT	\$32,548	41.5
4	Census tract 50027966000	VT	\$21,962	35.3
5	Census tract 50023955200	VT	\$10,300	26.2
6	Census tract 50023954300	VT	\$9,566	25.2

Tsunami

Rank	Community	State	EAL Value	Score
	Census tract 50021963300	VT	N/A	--
	Census tract 50023954300	VT	N/A	--
	Census tract 50023955200	VT	N/A	--
	Census tract 50025968500	VT	N/A	--
	Census tract 50027966000	VT	N/A	--
	Census tract 50027966300	VT	N/A	--

Volcanic Activity

Rank	Community	State	EAL Value	Score
	Census tract 50021963300	VT	N/A	--
	Census tract 50023954300	VT	N/A	--
	Census tract 50023955200	VT	N/A	--
	Census tract 50025968500	VT	N/A	--
	Census tract 50027966000	VT	N/A	--
	Census tract 50027966300	VT	N/A	--

Wildfire

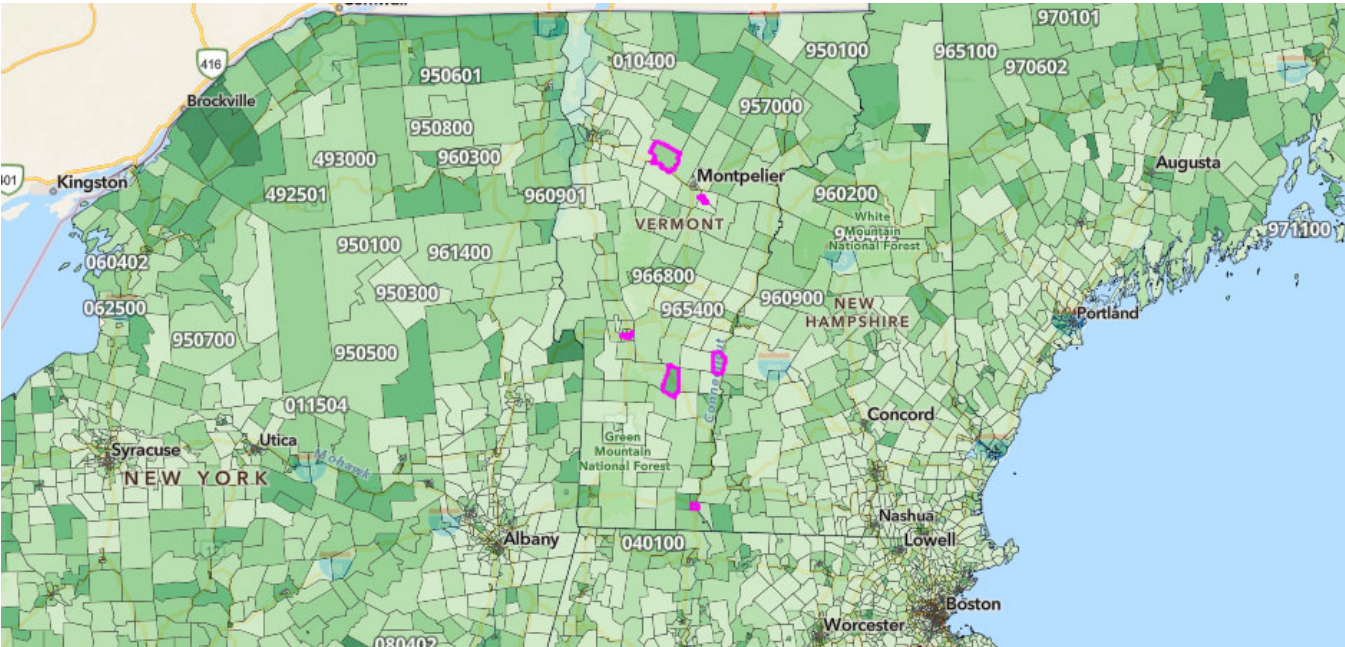
Rank	Community	State	EAL Value	Score
1	Census tract 50023954300	VT	\$3,462	78.9
2	Census tract 50027966300	VT	\$2,606	77.0
3	Census tract 50027966000	VT	\$1,232	68.6
4	Census tract 50021963300	VT	\$1,072	66.6
5	Census tract 50025968500	VT	\$710	60.8
6	Census tract 50023955200	VT	\$702	60.7

Winter Weather

Rank	Community	State	EAL Value	Score
1	Census tract 50023954300	VT	\$14,146	91.2
2	Census tract 50023955200	VT	\$9,508	86.7
3	Census tract 50021963300	VT	\$7,041	82.2
4	Census tract 50025968500	VT	\$4,220	72.9
5	Census tract 50027966300	VT	\$4,125	72.5
6	Census tract 50027966000	VT	\$3,368	68.5

Social Vulnerability

Social Vulnerability measures the susceptibility of social groups to the adverse impacts of natural hazards, including disproportionate death, injury, loss, or disruption of livelihood.



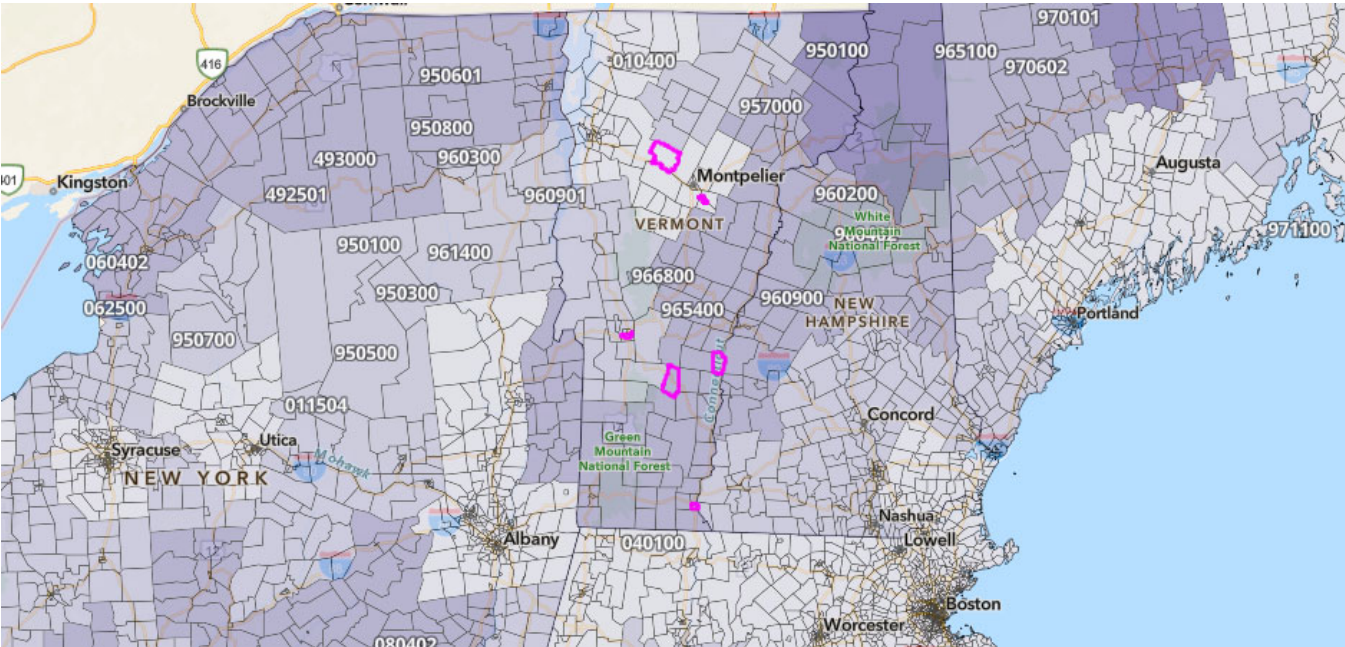
Social Vulnerability Legend

- Very High
- Relatively High
- Relatively Moderate
- Relatively Low
- Very Low
- Data Unavailable

Rank	Community	State	Rating	Score
1	Census tract 50021963300	VT	Relatively High	77.6
2	Census tract 50025968500	VT	Relatively High	76.3
3	Census tract 50023955200	VT	Relatively High	72.5
4	Census tract 50027966300	VT	Relatively High	68.0
5	Census tract 50027966000	VT	Relatively High	65.6
6	Census tract 50023954300	VT	Relatively Moderate	46.5

Community Resilience

Community Resilience measures a County's ability to prepare for anticipated natural hazards, adapt to changing conditions, and withstand and recover rapidly from disruptions.



Community Resilience Legend

Very High

Relatively High

Relatively Moderate

Relatively Low

Very Low

Data Unavailable

Rank	Community	State	Rating	Score
1	Census tract 50023954300	VT	Very High	86.1
1	Census tract 50023955200	VT	Very High	86.1
3	Census tract 50021963300	VT	Relatively High	64.3
4	Census tract 50025968500	VT	Relatively Moderate	57.9
5	Census tract 50027966000	VT	Relatively Moderate	54.9
5	Census tract 50027966300	VT	Relatively Moderate	54.9

About the National Risk Index

The National Risk Index is a dataset and online tool to help illustrate the United States communities most at risk for 18 natural hazards: Avalanche, Coastal Flooding, Cold Wave, Drought, Earthquake, Hail, Heat Wave, Hurricane, Ice Storm, Landslide, Lightning, Riverine Flooding, Strong Wind, Tornado, Tsunami, Volcanic Activity, Wildfire, and Winter Weather.

The National Risk Index leverages available source data for Expected Annual Loss due to these 18 hazard types, Social Vulnerability, and Community Resilience to develop a baseline relative risk measurement for each United States county and Census tract. These measurements are calculated using

average past conditions, but they cannot be used to predict future outcomes for a community. The National Risk Index is intended to fill gaps in available data and analyses to better inform federal, state, local, tribal, and territorial decision makers as they develop risk reduction strategies.

Explore the National Risk Index Map at hazards.fema.gov/nri/map.

Visit the National Risk Index website at hazards.fema.gov/nri/learn-more to access supporting documentation and links.

Calculating the Risk Index

Risk Index scores are calculated using an equation that combines scores for Expected Annual Loss due to natural hazards, Social Vulnerability and Community Resilience:

$$\text{Risk Index} = \text{Expected Annual Loss} \times \text{Social Vulnerability} \div \text{Community Resilience}$$

Risk Index scores are presented as a composite score for all 18 hazard types, as well as individual scores for each hazard type.

For more information, visit hazards.fema.gov/nri/determining-risk.

Calculating Expected Annual Loss

Expected Annual Loss scores are calculated using an equation that combines values for exposure, annualized frequency, and historic loss ratios for 18 hazard types:

$$\text{Expected Annual Loss} = \text{Exposure} \times \text{Annualized Frequency} \times \text{Historic Loss Ratio}$$

Expected Annual Loss scores are presented as a composite score for all 18 hazard types, as well as individual scores for each hazard type.

For more information, visit hazards.fema.gov/nri/expected-annual-loss.

Calculating Social Vulnerability

Social Vulnerability is measured using the Social Vulnerability Index (SVI) published by the Centers for Disease Control and Prevention (CDC).

For more information, visit hazards.fema.gov/nri/social-vulnerability.

Calculating Community Resilience

Community Resilience is measured at the County level using the Baseline Resilience Indicators for Communities (HVRI BRIC) published by the University of South Carolina's Hazards and Vulnerability Research Institute (HVRI).

For more information, visit hazards.fema.gov/nri/community-resilience.

How to Take Action

There are many ways to reduce natural hazard risk through mitigation. Communities with high National Risk Index scores can take action to reduce risk by decreasing Expected Annual Loss due to natural hazards, decreasing Social Vulnerability, and increasing Community Resilience.

For information about how to take action and reduce your risk, visit hazards.fema.gov/nri/take-action.

Disclaimer

The National Risk Index (the Risk Index or the Index) and its associated data are meant for planning purposes only. This tool was created for broad nationwide comparisons and is not a substitute for localized risk assessment analysis. Nationwide datasets used as inputs for the National Risk Index are, in many cases, not as accurate as available local data. Users with access to local data for each National Risk Index risk factor should consider substituting the Risk Index data with local data to recalculate a more accurate risk index. If you decide to download the National Risk Index data and substitute it with local data, you assume responsibility for the accuracy of the data and any resulting data index. Please visit the [Contact Us](#) page if you would like to discuss this process further.

The methodology used by the National Risk Index has been reviewed by subject matter experts in the fields of natural hazard risk research, risk analysis, mitigation planning, and emergency management. The processing methods used to create the National Risk Index have produced results similar to those from other natural hazard risk analyses conducted on a smaller scale. The breadth and combination of geographic information systems (GIS) and data processing techniques leveraged by the National Risk Index enable it to incorporate multiple hazard types and risk factors, manage its nationwide scope, and capture what might have been missed using other methods.

The National Risk Index does not consider the intricate economic and physical interdependencies that exist across geographic regions. Keep in mind that hazard impacts in surrounding counties or Census tracts can cause indirect losses in your community regardless of your community's risk profile.

Nationwide data available for some risk factors are rudimentary at this time. The National Risk Index will be continuously updated as new data become available and improved methodologies are identified.

The National Risk Index Contact Us page is available at hazards.fema.gov/nri/contact-us.