

Transition from Command to Coordination



What is Command

- **ICS Tells us:**
- **“Command: The act of directing, ordering, or controlling by virtue of explicit statutory, regulatory, or delegated authority.” - ICS 402 Slide 27**

What is Coordination

- **ICS Tells us:**
- **“Multiagency coordination is a process that allows all levels of government and all disciplines to work together more efficiently and effectively.” – ICS 402**
Slide 28

Really????

- **directing, ordering, or controlling by virtue of explicit statutory, regulatory, or delegated authority.**



- **process that allows all levels of government and all disciplines to work together more efficiently and effectively.**



Command and Coordination Scale



Command

Coordination



The Sweet Spot



Transitioning from IC to EOC



- **Multiple Incidents**
- **Widespread impact**
- **Auxiliary Functions**
 - **Shelters**
 - **Notifications**
- **Augment ICS**
 - **Planning**
 - **Logistics**
 - **Finance/Admin**

Multiple Incidents



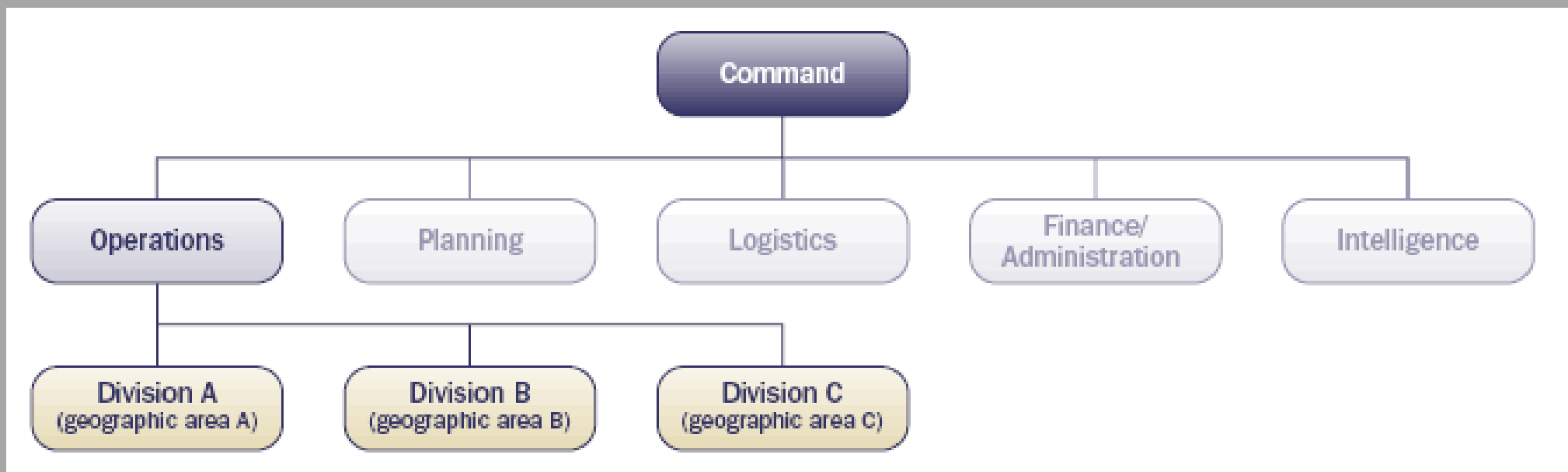
Widespread Impact



Auxiliary Functions



Augment ICS



Essential EOC functions

- **Communications**
- **Situational Assessment**
- **Resource Support**
- **Financial Tracking**

- **Delegation of Authority/Elected Officials?**

EOC Models

- **Support**
 - **Non-response staff in EOC to lend support**
- **Hybrid-ICS**
 - **Reps from various agencies to staff Operations, Planning, Logistics, Finance**
- **Command Post**
 - **IC moves to EOC**
 - **Operates as “Area Command”**
 - **Support functions there to provide resources and support**

The Expanding Incident!



Module 1: Initial Event

- **Summer 2019**
- **Hot, humid air mass is pushed through by a cold front**
- **Thunderstorms pop-up and begin training**
- **60MPH wind gusts reported**
- **FD dispatched to:**
 - **8 trees/wires down**
 - **Lightning Strike to a house**
 - **Tree on a car**
 - **2 flooded basements**
 - **A partridge in a pear tree**



Questions

- **Who is the primary IC?**
- **How many command posts are there?**
- **What are the Fire Chief's (or designees) thoughts and concerns?**

Module 2: Help is on the way



- **Through planning and training, the EMD is activated and calls together a support staff in the EOC**
- **The Fire Chief reports to the EOC to manage resources from a central (and dry) location**
- **Communications is established and emergency calls are routed from dispatch to the EOC**
- **VT-ALERT messages are sent to the town**

Questions

- **Is this model effective?**
- **What strengths are there in moving to an Area Command/EOC combination model?**
- **What are the Drawbacks?**

Module 3: Recovery

- **5 Roads were closed for up to 2 days**
- **Fire and town highway resources were deployed and costs tracked from the initial incident.**
- **Flooding in neighboring communities and Co-Op power damages were in excess of \$2 million**
- **Recovery is streamlined and services restored quickly**



Take Away Points

- **Incident Commanders**

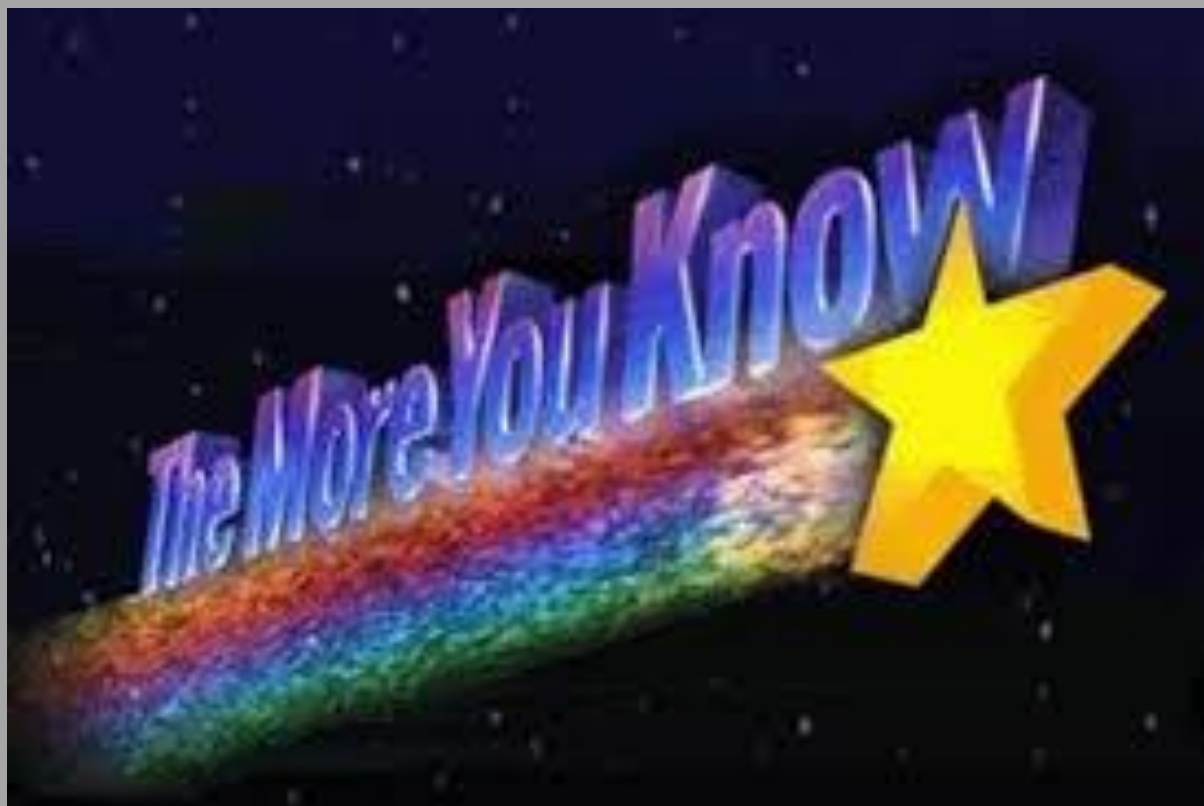
- **Seek help from EMD**
- **Reach out proactively to see what support can be provided**
- **Don't fear the help**

- **EOC Managers/EMDS**

- **Work with the ICs in town**
- **Develop models of support and inform the IC**
- **Stay aware of incidents in town/be available**



Questions?





Thank You

Richard Cogliano
Southern Regional Coordinator
Vermont Emergency Management

(802) 505-1699 (cell)

Richard.Cogliano@Vermont.gov