

2/18/21 Municipal & First Responder Call Notes

I. **Welcome and Introduction:** VEM Director Erica Bornemann

- Welcome participants on the call.
- This is the weekly call for first responders, EMDs, RPCs, and municipal officials.
- The next call will be on Thursday, February 25th at 2pm. The invitation will go out on Monday, February 22nd.
- The meeting invitations include a link to a survey we use to guide our talking points. The survey will only capture one question per response. To ask multiple questions, fill out the survey multiple times. The survey link will not change week to week.
- On today's call we will hear from Representative Peter Welch and DEPRIP Director Dan Batsie. In addition, we have Fire Academy Chief Pete Lynch and Vermont State Police Major Dan Trudeau available to answer questions. We will be providing you all an overview of the State's response to COVID-19 and we will have time for additional questions at the end of the call.
- FAQs will be updated as needed and can be found at: <https://vem.vermont.gov/coronavirus>
- From this site you can also click on the "[Call Notes](#)" section on the left-hand side where we will post notes from this call. It will be added to the list of First Responder Notes.

AGENDA:

- I. **Intro/call format**
- II. **Representative Welch comments**
- III. **COVID-19/VDH overview**
- IV. **SEOC overview/VEM comments**
- V. **Q&A with participants**

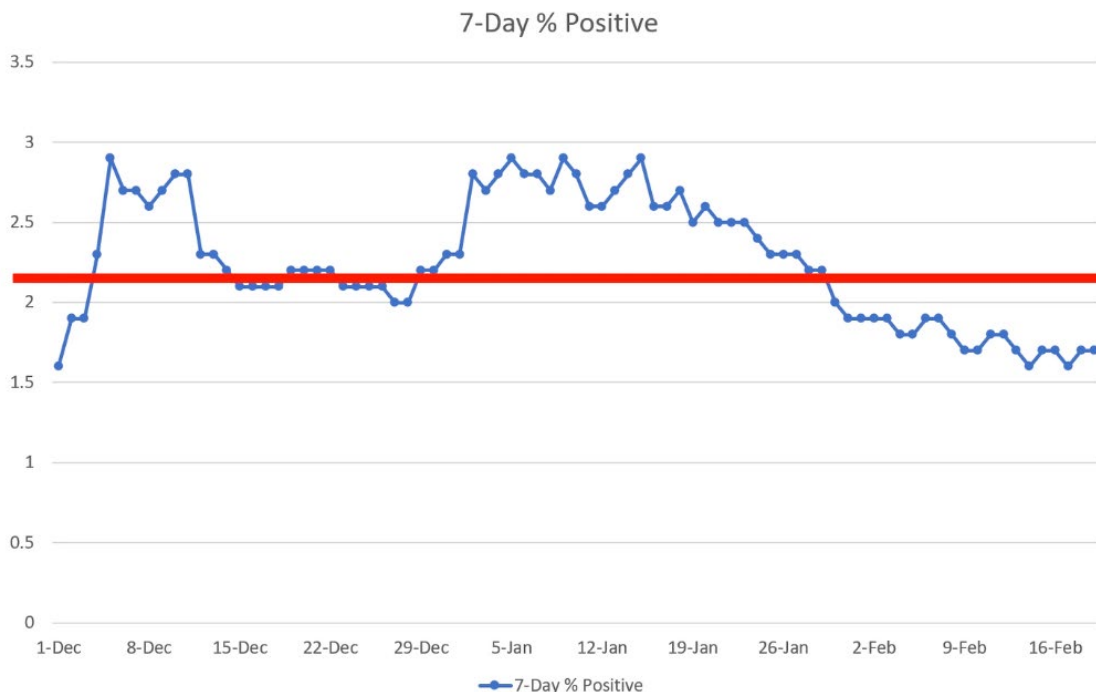
II. **Federal Legislation Update:** Representative Peter Welch

- Each of you represent organizations vital to Vermont. Thank you for your work during this pandemic.
- President Biden is committed to passing a \$1.9 trillion coronavirus relief package through congress. This package has similar elements to the CARES Act, including checks for individuals, unemployment support, and significant aid to states and municipalities.
 - This proposal may be voted on in a couple of weeks.
 - This proposal, if it passes, would include \$960 million for Vermont, two-thirds of which would go to the state and one-third of which would go to municipalities. ****There is a town-by-town breakdown at the end of these notes****
 - There is flexibility on how this money is spent, but it must be on COVID-related expenses. States and municipalities have the responsibility and authority to use the funds wisely.
 - It is unclear whether the proposal will pass. Congress is not as unified as it was when it passed the CARES Act last year. The debates now are not about whether help is needed, but rather how much help is warranted.
 - The challenges of COVID-19 are universal; it's not a red state / blue state divide. There is a chance for unity going forward. There is significant bipartisan support for the federal government to play a significant role in recovery. The combination of federal relief and universally available vaccinations would allow us to go back to normal and have a self-sustaining economic recovery.
- Questions
 - The distribution of funds to states and municipalities is based on formulas. Vermont's congressional delegation are advocates for a "small-state minimum" in such formulas, so Vermont has done pretty well so far. The more complicated part is how localities can actually spend the money. It must go toward COVID-related costs. This is a big opportunity for Vermont if we're wise and careful.

III. COVID-19 Overview/VDH Comments: HOC Incident Commander and DEPRIP Director Dan Batsie

• Overall update on COVID-19 in Vermont

- Vermont reported 131 cases of COVID-19 for yesterday.
- The 7-day average test positivity rate is 1.7%, which is lower than it was in December.



- The number of COVID-19 deaths in Vermont is also decreasing. There have been 6 deaths associated with COVID-19 in the last week, and 30 in the last 30 days.
 - The number of COVID-19 hospitalizations in Vermont remains stable. Today, 43 Vermonters are hospitalized with COVID-19, including 11 in intensive care and 4 on ventilators (this last number is higher than it was recently).
 - More Vermont COVID-19 statistics are available on the [Department of Health website](#).
 - The Department of Health is tracking and managing 79 COVID-19 outbreaks. 30 outbreaks are at non-health workplaces, and 16 are at K-12 schools.
 - We received a question on why rates of COVID-19 at long-term care facilities aren't decreasing more significantly following vaccinations.
 - The number of COVID-19 cases at long-term care facilities is actually notably decreasing. There are significantly fewer cases and outbreaks at such facilities than in months past. This improvement is at least partially attributable to vaccinations. The [outbreaks listed on the Department of Health website](#) stay up until 28 days after the last associated case was reported, so this list is slow to reflect improving trends.
- Testing/tracing updates
- The Department of Health continues to offer [publicly available COVID-19 testing](#), including priority testing for first responders. There are 21 testing locations today, and all had appointments available this morning.

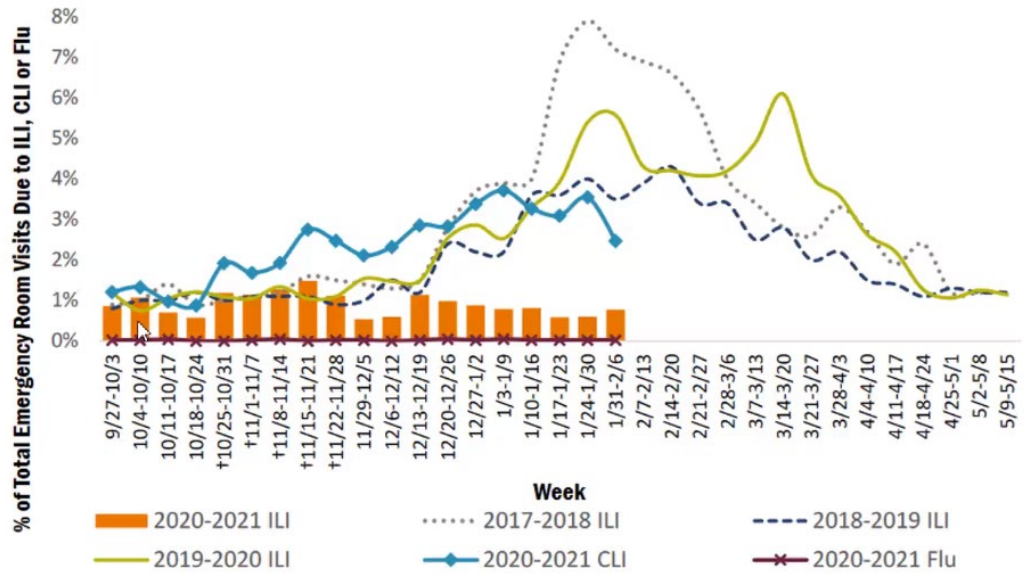
2/18/21 Municipal & First Responder Call Notes

- The Vermont Emergency Management Watch Officer, available 24/7, can help first response agencies with threatened operations due to COVID-19 outbreaks, quarantines, exposures, etc.
- **Vaccination updates**
 - Age-banded vaccinations continue. On Tuesday, registration opened for those aged 70 and above, and registration for those aged 65 and above will shortly follow due to increasing vaccine supply.
 - After the 65 and older age band, the State will vaccinate those with medical conditions putting them at increased risk to COVID-19.
 - [Statistics on Vermont's COVID-19 vaccination campaign](#) are available on the Department of Health website.
 - The Department of Health is working to reach different populations, including the homebound. Almost 1,000 homebound Vermonters received their first vaccine dose so far, as EMS and home health agencies distribute the vaccine across every county.
 - Right now the focus is on home health agency patients, but as that finishes up (which already happened in some counties), we are turning to hospitals, primary care providers, and area agencies on aging to identify additional homebound individuals.
 - In the next couple of weeks, the State will implement a call center so that homebound Vermonters can request at-home vaccination. This call center will have to triage requests, because many will prefer to get vaccinated at home, but it's costly and inefficient to do so. The focus must be on those who truly cannot reach vaccination clinics.
 - We received a question on whether Vermont is preparing for the possibility of COVID-19 vaccinations requiring annual boosters.
 - Yes, the State is standing up resources that could be used for this eventuality. Furthermore the COVID-19 vaccine may become like the flu shot, distributed regularly by healthcare providers as opposed to the government.
- **EMS updates**
 - We received multiple questions on the resumption of fire/EMS non-emergency activities.
 - The Office of EMS and the Division of Fire Safety continue to discuss possible updates to the [Guidance on Fire and EMS Department Non-Emergency Activities](#), but are not yet ready to make changes. The overarching state guidance does not recommend gatherings.
 - There are still ways to train safety. Remote training is always preferred, and the Office of EMS can assist agencies in setting up the needed technology. When required, in-person training must be in small groups, socially distanced, and with appropriate PPE.
 - A Health Alert Network announcement will go out next week, defining how Vermont will implement [new CDC guidance on vaccinated individuals' exposure risk](#). Fully vaccinated individuals will not have to quarantine after a COVID-19 exposure, but this exemption will not apply to healthcare workers (including first responders). Please continue to follow PPE guidance to avoid exposures.
 - Next week we will have more EMS updates to share, and will introduce the new Vermont EMS Chief Will Moran to you all.

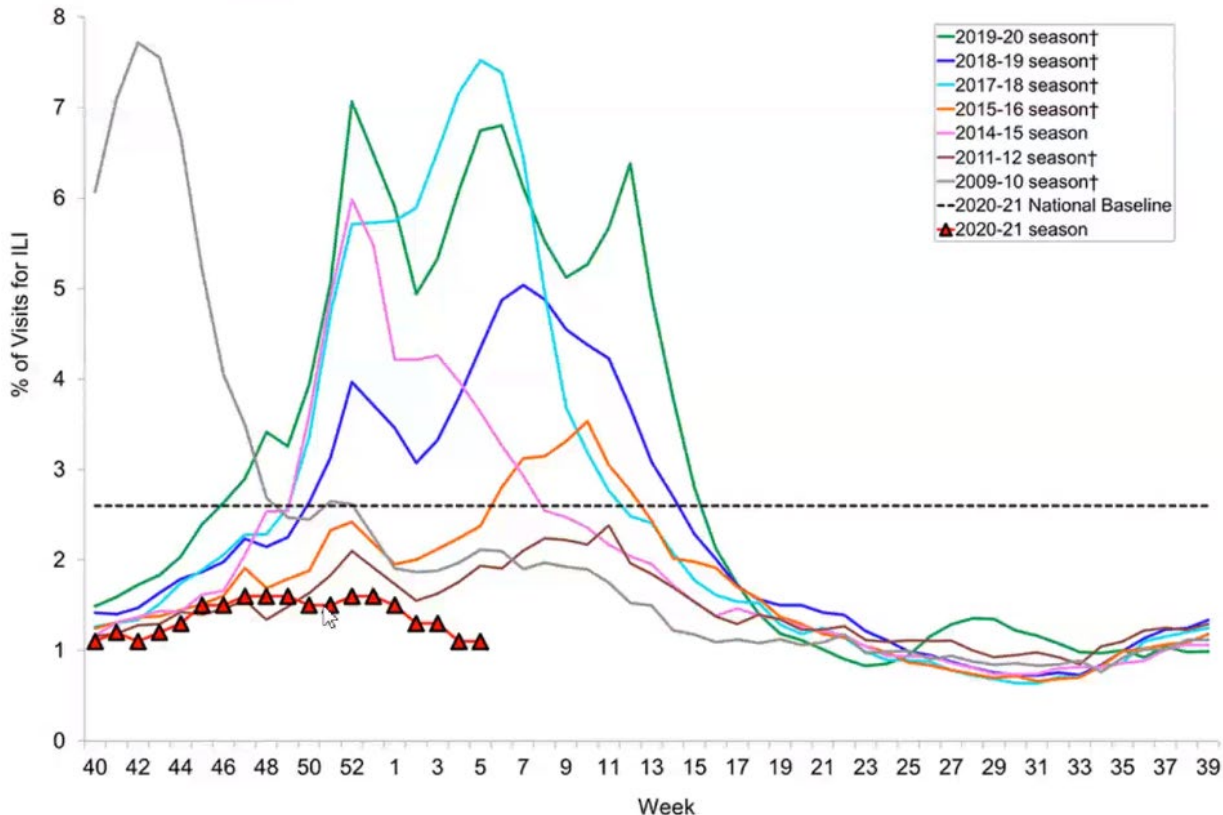
- Last week there was a question about flu prevalence this winter, so here are a couple graphs on the subject. The main takeaway is that flu cases are significantly lower than in previous years, both nationally and in Vermont.

Syndromic Surveillance

Vermont Emergency Room and Urgent Care Visits for Influenza-like Illness, COVID-19-like Illness, or Diagnosed Influenza



Percentage of Visits for Influenza-like Illness (ILI) Reported by the U.S. Outpatient Influenza-like Illness Surveillance Network (ILINet), Weekly National Summary, 2020-2021 and Selected Previous Seasons



†These seasons did not have a week 53, so the week 53 value is an average of week 52 and week 1.

<https://www.cdc.gov/flu/weekly/index.htm>

2/18/21 Municipal & First Responder Call Notes

IV. SEOC Overview/VEM Comments: VEM Director Erica Bornemann

- **SEOC status:** The SEOC remains activated every weekday from 0800 until 1600. On weekends the SEOC is in monitoring status, meaning the watch officer is the point of contact for any resource needs that arise. The SEOC is entirely virtual.
- **Policy updates:**
 - Following new [CDC guidance](#), Vermont will no longer require fully vaccinated individuals to quarantine if they were exposed to someone with COVID-19, as long as: 1) it's been between 2 weeks and 3 months since the individual was vaccinated and 2) the individual is asymptomatic.
 - The governor will make an announcement tomorrow about how the CDC guidance will impact Vermont's travel quarantine policy.
 - The State's policy team is looking at how this CDC guidance will impact other policies as well.
 - Yesterday, the Agency of Education released [guidance allowing the resumption of school music programs](#), with stipulations on spacing, group size, ventilation, and rehearsal length.
 - At tomorrow's press conference, Governor Scott and other state officials will announce changes to long-term care facility guidance, including visitation.
 - On Monday, Governor Scott [extended the executive order](#) and accompanying state of emergency for another month. Scott mentioned in a preceding press conference that he's optimistic that the executive order will not have to be extended too many more times.

V. Questions from Call Participants

- The Department of Health makes note of all adverse reactions to the COVID-19 vaccine, but Dan Batsie said he is not sure they are publicly reported – he will follow up.
- The Johnson & Johnson COVID-19 vaccine is in the final stages of the federal Emergency Use Authorization process, and hopefully it will be available soon. How this particular vaccine will fit into Vermont's vaccine strategy is still being worked out. More information on the vaccine will get released if it receives authorization, and that information will inform policy.
- Vaccine phase 1a includes first responders with direct patient contact, and does not include communications staff or dispatchers. The current policy of vaccine distribution and priority is based on age bands, as a means to reduce death and severe illness. The next age band will be those 65 years old and older, followed by younger people with chronic health conditions putting them at greater risk for COVID-19. The phases after that are still undecided, and the policy teams are assessing whether to include a phase for essential workers (e.g., dispatchers). Much of Vermont's vaccine strategy is dependent on the amount of vaccine received in the state.
- Similarly, teachers are part of the conversation about essential workers who may be part of an upcoming phase of vaccine distribution. That's all we can say, because many decisions rest with the governor and his team.
- Home health providers should be eligible for vaccines under phase 1a regardless of their employer, though it can be tricky to determine eligibility for sub-contractors.
- If you're going out in public, you're amidst coronavirus. The risk doesn't really change because of a nearby outbreak; it's important to be careful all the time. The Department of Health notifies local health offices and municipalities if an outbreak threatens the public, usually involving a large-scale situation. The Department of Health needs to be simultaneously careful with privacy, and not needlessly stigmatize individuals or organizations. Therefore, the Department doesn't publish every outbreak; the vast majority of outbreaks don't increase community risk.

VERMONT

State, Local, Tribal, and Territorial Government Assistance

(all totals in billions and are estimates)

This spreadsheet shows funding estimates for Vermont municipalities from the proposed American Recovery Plan. Please note that the estimates are approximations and subject to change.

	<u>State</u>	<u>to State Govts</u>	<u>to Local Govts</u>	<u>Total</u>
Vermont		0.655	0.307	0.961

Billions

Addison County	Vermont	0.007
Bennington County	Vermont	0.007
Caledonia County	Vermont	0.006
Chittenden County	Vermont	0.032
Essex County	Vermont	0.001
Franklin County	Vermont	0.010
Grand Isle County	Vermont	0.001
Lamoille County	Vermont	0.005
Orange County	Vermont	0.006
Orleans County	Vermont	0.005
Rutland County	Vermont	0.011
Washington County	Vermont	0.011
Windham County	Vermont	0.008
Windsor County	Vermont	0.011
		0.122

City Allocations (Entitlement Cities and State Nonentitlement Totals) in billions

Vermont	Burlington	0.018	
Vermont	Vermont	0.167	0.307

Nonentitlement Allocation Projections

All data reflects **estimated** awards. Actual award may vary. Estimates are based on data from CRS, Census Bureau (2018 data), and HUD.

Uses Data from 2018 Census

Estimates reflect the total nonentitlement that underlying population generates - overlapping jurisdictions may reduce amounts provided to governments, and town totals will not sum to total allocation.

"No Overlap" calculations assume that, in some states, certain township and city governments have entirely distinct populations: "All Overlap" calculations assume those populations have maximum overlap.

Census Municipality	County	State	"No Overlap" Allocation	"All Overlap" Allocation
Addison town	Addison County	Vermont	\$247,050	\$296,966
Albany town	Orleans County	Vermont	\$168,334	\$202,346
Albany village		Vermont	\$34,369	\$41,313
Alburgh town	Grand Isle County	Vermont	\$384,157	\$461,774
Alburgh village		Vermont	\$95,716	\$115,055
Andover town	Windsor County	Vermont	\$87,401	\$105,060
Arlington town	Bennington County	Vermont	\$410,765	\$493,759
Athens town	Windham County	Vermont	\$80,933	\$97,286
Bakersfield town	Franklin County	Vermont	\$247,974	\$298,077
Baltimore town	Windsor County	Vermont	\$45,641	\$54,862
Barnard town	Windsor County	Vermont	\$171,106	\$205,677
Barnet town	Caledonia County	Vermont	\$302,484	\$363,600
Barre city		Vermont	\$1,590,027	\$1,911,288
Barre town	Washington County	Vermont	\$1,423,911	\$1,711,608
Barton town	Orleans County	Vermont	\$465,275	\$559,282
Barton village		Vermont	\$120,846	\$145,262
Bellows Falls village		Vermont	\$555,078	\$667,229
Belvidere town	Lamoille County	Vermont	\$66,890	\$80,405
Bennington town	Bennington County	Vermont	\$2,772,062	\$3,332,149
Benson town	Rutland County	Vermont	\$187,551	\$225,445
Berkshire town	Franklin County	Vermont	\$325,581	\$391,364
Berlin town	Washington County	Vermont	\$517,198	\$621,696
Bethel town	Windsor County	Vermont	\$362,722	\$436,009
Bloomfield town	Essex County	Vermont	\$41,760	\$50,198
Bolton town	Chittenden County	Vermont	\$219,888	\$264,315
Bradford town	Orange County	Vermont	\$500,937	\$602,150
Braintree town	Orange County	Vermont	\$221,920	\$266,759
Brandon town	Rutland County	Vermont	\$696,249	\$836,924
Brattleboro town	Windham County	Vermont	\$2,119,605	\$2,547,866
Bridgewater town	Windsor County	Vermont	\$177,573	\$213,451
Bridport town	Addison County	Vermont	\$219,333	\$263,649
Brighton town	Essex County	Vermont	\$219,518	\$263,871
Bristol town	Addison County	Vermont	\$717,868	\$862,912
Brookfield town	Orange County	Vermont	\$246,496	\$296,300
Brookline town	Windham County	Vermont	\$97,564	\$117,276
Brownington town	Orleans County	Vermont	\$177,388	\$213,229
Brunswick town	Essex County	Vermont	\$21,250	\$25,543

Burke town	Caledonia County	Vermont	\$314,864	\$378,482
Cabot town	Washington County	Vermont	\$264,974	\$318,511
Calais town	Washington County	Vermont	\$295,832	\$355,604
Cambridge town	Lamoille County	Vermont	\$707,336	\$850,251
Cambridge village		Vermont	\$45,271	\$54,418
Canaan town	Essex County	Vermont	\$172,030	\$206,788
Castleton town	Rutland County	Vermont	\$836,866	\$1,005,953
Cavendish town	Windsor County	Vermont	\$259,800	\$312,292
Charleston town	Orleans County	Vermont	\$183,301	\$220,337
Charlotte town	Chittenden County	Vermont	\$707,521	\$850,473
Chelsea town	Orange County	Vermont	\$237,996	\$286,082
Chester town	Windsor County	Vermont	\$560,251	\$673,449
Chittenden town	Rutland County	Vermont	\$219,888	\$264,315
Clarendon town	Rutland County	Vermont	\$449,384	\$540,180
Colchester town	Chittenden County	Vermont	\$3,233,456	\$3,886,767
Concord town	Essex County	Vermont	\$226,909	\$272,756
Corinth town	Orange County	Vermont	\$262,202	\$315,179
Cornwall town	Addison County	Vermont	\$223,029	\$268,091
Coventry town	Orleans County	Vermont	\$194,203	\$233,441
Craftsbury town	Orleans County	Vermont	\$218,040	\$262,094
Danby town	Rutland County	Vermont	\$242,246	\$291,191
Danville town	Caledonia County	Vermont	\$398,569	\$479,099
Derby Center village		Vermont	\$101,629	\$122,163
Derby Line village		Vermont	\$115,487	\$138,821
Derby town	Orleans County	Vermont	\$788,269	\$947,537
Dorset town	Bennington County	Vermont	\$359,950	\$432,677
Dover town	Windham County	Vermont	\$196,605	\$236,329
Dummerston town	Windham County	Vermont	\$326,875	\$392,919
Duxbury town	Washington County	Vermont	\$242,431	\$291,413
East Haven town	Essex County	Vermont	\$55,249	\$66,412
East Montpelier town	Washington County	Vermont	\$475,068	\$571,054
Eden town	Lamoille County	Vermont	\$253,333	\$304,518
Elmore town	Lamoille County	Vermont	\$159,649	\$191,906
Enosburg Falls village		Vermont	\$239,844	\$288,304
Enosburgh town	Franklin County	Vermont	\$512,024	\$615,477
Essex Junction village		Vermont	\$2,019,455	\$2,427,480
Essex town	Chittenden County	Vermont	\$4,048,703	\$4,866,732
Fair Haven town	Rutland County	Vermont	\$475,438	\$571,498
Fairfax town	Franklin County	Vermont	\$881,398	\$1,059,482
Fairfield town	Franklin County	Vermont	\$357,364	\$429,568
Fairlee town	Orange County	Vermont	\$181,084	\$217,671
Fayston town	Washington County	Vermont	\$247,050	\$296,966
Ferrisburgh town	Addison County	Vermont	\$501,676	\$603,039
Fletcher town	Franklin County	Vermont	\$247,420	\$297,410
Franklin town	Franklin County	Vermont	\$264,974	\$318,511

Georgia town	Franklin County	Vermont	\$881,583	\$1,059,704
Glover town	Orleans County	Vermont	\$202,334	\$243,214
Goshen town	Addison County	Vermont	\$29,934	\$35,982
Grafton town	Windham County	Vermont	\$125,280	\$150,593
Granby town	Essex County	Vermont	\$15,337	\$18,435
Grand Isle town	Grand Isle County	Vermont	\$386,559	\$464,662
Granville town	Addison County	Vermont	\$56,727	\$68,189
Greensboro town	Orleans County	Vermont	\$130,454	\$156,812
Groton town	Caledonia County	Vermont	\$180,530	\$217,005
Guildhall town	Essex County	Vermont	\$46,749	\$56,195
Guilford town	Windham County	Vermont	\$391,363	\$470,437
Halifax town	Windham County	Vermont	\$127,683	\$153,481
Hancock town	Addison County	Vermont	\$61,716	\$74,186
Hardwick town	Caledonia County	Vermont	\$529,948	\$637,022
Hartford town	Windsor County	Vermont	\$1,789,405	\$2,150,949
Hartland town	Windsor County	Vermont	\$643,587	\$773,622
Highgate town	Franklin County	Vermont	\$678,695	\$815,823
Hinesburg town	Chittenden County	Vermont	\$845,920	\$1,016,836
Holland town	Orleans County	Vermont	\$113,270	\$136,156
Hubbardton town	Rutland County	Vermont	\$124,172	\$149,260
Huntington town	Chittenden County	Vermont	\$369,189	\$443,783
Hyde Park town	Lamoille County	Vermont	\$546,762	\$657,234
Hyde Park village		Vermont	\$89,433	\$107,503
Ira town	Rutland County	Vermont	\$80,010	\$96,175
Irasburg town	Orleans County	Vermont	\$208,616	\$250,766
Isle La Motte town	Grand Isle County	Vermont	\$90,357	\$108,614
Jacksonville village		Vermont	\$38,619	\$46,422
Jamaica town	Windham County	Vermont	\$190,323	\$228,777
Jay town	Orleans County	Vermont	\$105,694	\$127,049
Jeffersonville village		Vermont	\$140,987	\$169,473
Jericho town	Chittenden County	Vermont	\$936,832	\$1,126,116
Johnson town	Lamoille County	Vermont	\$675,369	\$811,825
Johnson village		Vermont	\$284,745	\$342,277
Killington town	Rutland County	Vermont	\$140,987	\$169,473
Kirby town	Caledonia County	Vermont	\$90,912	\$109,280
Landgrove town	Bennington County	Vermont	\$28,641	\$34,428
Leicester town	Addison County	Vermont	\$200,486	\$240,993
Lemington town	Essex County	Vermont	\$18,478	\$22,211
Lincoln town	Addison County	Vermont	\$232,637	\$279,641
Londonderry town	Windham County	Vermont	\$309,875	\$372,485
Lowell town	Orleans County	Vermont	\$148,378	\$178,357
Ludlow town	Windsor County	Vermont	\$348,309	\$418,684
Ludlow village		Vermont	\$144,313	\$173,471
Lunenburg town	Essex County	Vermont	\$247,789	\$297,854
Lyndon town	Caledonia County	Vermont	\$1,084,840	\$1,304,029

Lyndonville village		Vermont	\$215,268	\$258,762
Maidstone town	Essex County	Vermont	\$36,771	\$44,201
Manchester town	Bennington County	Vermont	\$786,791	\$945,760
Manchester village		Vermont	\$136,737	\$164,364
Marlboro town	Windham County	Vermont	\$192,355	\$231,220
Marshfield town	Washington County	Vermont	\$275,691	\$331,394
Marshfield village		Vermont	\$47,119	\$56,639
Mendon town	Rutland County	Vermont	\$186,812	\$224,557
Middlebury town	Addison County	Vermont	\$1,615,712	\$1,942,162
Middlesex town	Washington County	Vermont	\$321,147	\$386,034
Willetown Springs town	Rutland County	Vermont	\$138,400	\$166,363
Milton town	Chittenden County	Vermont	\$2,029,618	\$2,439,696
Monkton town	Addison County	Vermont	\$387,667	\$465,994
Montgomery town	Franklin County	Vermont	\$222,844	\$267,869
Montpelier city		Vermont	\$1,374,020	\$1,651,637
Moretown town	Washington County	Vermont	\$309,506	\$372,040
Morgan town	Orleans County	Vermont	\$130,824	\$157,256
Morristown town	Lamoille County	Vermont	\$1,004,831	\$1,207,854
Morrisville village		Vermont	\$379,537	\$456,221
Mount Holly town	Rutland County	Vermont	\$229,866	\$276,309
Mount Tabor town	Rutland County	Vermont	\$48,043	\$57,750
New Haven town	Addison County	Vermont	\$318,005	\$382,258
Newark town	Caledonia County	Vermont	\$109,205	\$131,269
Newbury town	Orange County	Vermont	\$399,124	\$479,766
Newbury village		Vermont	\$65,966	\$79,295
Newfane town	Windham County	Vermont	\$297,125	\$357,159
Newfane village		Vermont	\$20,326	\$24,433
Newport city		Vermont	\$786,237	\$945,094
Newport town	Orleans County	Vermont	\$517,198	\$621,696
North Bennington village		Vermont	\$298,049	\$358,269
North Hero town	Grand Isle County	Vermont	\$148,193	\$178,135
North Troy village		Vermont	\$105,140	\$126,383
Northfield town	Washington County	Vermont	\$1,111,449	\$1,336,014
Norton town	Essex County	Vermont	\$29,749	\$35,760
Norwich town	Windsor County	Vermont	\$613,098	\$736,973
North Bennington village		Vermont	\$24,391	\$29,319
Orange town	Orange County	Vermont	\$204,181	\$245,436
Orleans village		Vermont	\$135,259	\$162,587
Orwell town	Addison County	Vermont	\$228,203	\$274,310
Panton town	Addison County	Vermont	\$129,161	\$155,257
Pawlet town	Rutland County	Vermont	\$256,104	\$307,850
Peacham town	Caledonia County	Vermont	\$133,780	\$160,810
Perkinsville village		Vermont	\$22,913	\$27,542
Peru town	Bennington County	Vermont	\$65,966	\$79,295
Pittsfield town	Rutland County	Vermont	\$101,444	\$121,940

Pittsford town	Rutland County	Vermont	\$518,676	\$623,473
Plainfield town	Washington County	Vermont	\$232,637	\$279,641
Plymouth town	Windsor County	Vermont	\$111,976	\$134,601
Pomfret town	Windsor County	Vermont	\$159,649	\$191,906
Poultney town	Rutland County	Vermont	\$604,229	\$726,312
Poultney village		Vermont	\$286,593	\$344,498
Pownal town	Bennington County	Vermont	\$631,946	\$759,629
Proctor town	Rutland County	Vermont	\$297,680	\$357,825
Putney town	Windham County	Vermont	\$483,753	\$581,494
Randolph town	Orange County	Vermont	\$865,877	\$1,040,825
Reading town	Windsor County	Vermont	\$118,998	\$143,041
Readsboro town	Bennington County	Vermont	\$134,150	\$161,255
Richford town	Franklin County	Vermont	\$426,471	\$512,638
Richmond town	Chittenden County	Vermont	\$770,161	\$925,770
Ripton town	Addison County	Vermont	\$106,433	\$127,937
Rochester town	Windsor County	Vermont	\$202,888	\$243,881
Rockingham town	Windham County	Vermont	\$930,180	\$1,118,120
Roxbury town	Washington County	Vermont	\$130,824	\$157,256
Royalton town	Windsor County	Vermont	\$527,545	\$634,135
Rupert town	Bennington County	Vermont	\$127,498	\$153,258
Rutland city		Vermont	\$2,831,746	\$3,403,892
Rutland town	Rutland County	Vermont	\$756,487	\$909,333
Ryegate town	Caledonia County	Vermont	\$204,181	\$245,436
Salisbury town	Addison County	Vermont	\$206,399	\$248,101
Sandgate town	Bennington County	Vermont	\$72,434	\$87,069
Saxtons River village		Vermont	\$100,520	\$120,830
Searsburg town	Bennington County	Vermont	\$20,141	\$24,210
Shaftsbury town	Bennington County	Vermont	\$637,489	\$766,292
Sharon town	Windsor County	Vermont	\$283,267	\$340,500
Sheffield town	Caledonia County	Vermont	\$132,302	\$159,033
Shelburne town	Chittenden County	Vermont	\$1,436,660	\$1,726,934
Sheldon town	Franklin County	Vermont	\$412,058	\$495,313
Shoreham town	Addison County	Vermont	\$229,496	\$275,865
Shrewsbury town	Rutland County	Vermont	\$184,040	\$221,225
South Burlington city		Vermont	\$3,600,613	\$4,328,107
South Hero town	Grand Isle County	Vermont	\$300,821	\$361,601
Springfield town	Windsor County	Vermont	\$1,653,776	\$1,987,917
St. Albans city		Vermont	\$1,258,903	\$1,513,260
St. Albans town	Franklin County	Vermont	\$1,199,588	\$1,441,962
St. George town	Chittenden County	Vermont	\$135,259	\$162,587
St. Johnsbury town	Caledonia County	Vermont	\$1,331,151	\$1,600,107
Stamford town	Bennington County	Vermont	\$150,041	\$180,356
Stannard town	Caledonia County	Vermont	\$40,097	\$48,199
Starksboro town	Addison County	Vermont	\$324,288	\$389,809
Stockbridge town	Windsor County	Vermont	\$131,378	\$157,923

Stowe town	Lamoille County	Vermont	\$819,867	\$985,518
Strafford town	Orange County	Vermont	\$198,638	\$238,772
Stratton town	Windham County	Vermont	\$36,956	\$44,423
Sudbury town	Rutland County	Vermont	\$100,335	\$120,608
Sunderland town	Bennington County	Vermont	\$174,247	\$209,453
Sutton town	Caledonia County	Vermont	\$186,258	\$223,891
Swanton town	Franklin County	Vermont	\$1,215,110	\$1,460,619
Swanton village		Vermont	\$445,688	\$535,738
Thetford town	Orange County	Vermont	\$471,188	\$566,390
Tinmouth town	Rutland County	Vermont	\$110,498	\$132,824
Topsham town	Orange County	Vermont	\$223,768	\$268,980
Townshend town	Windham County	Vermont	\$229,311	\$275,643
Troy town	Orleans County	Vermont	\$282,897	\$340,056
Tunbridge town	Orange County	Vermont	\$245,757	\$295,411
Underhill town	Chittenden County	Vermont	\$571,523	\$686,998
Vergennes city		Vermont	\$480,611	\$577,718
Vernon town	Windham County	Vermont	\$406,515	\$488,650
Vershire town	Orange County	Vermont	\$137,291	\$165,030
Victory town	Essex County	Vermont	\$11,826	\$14,215
Waitsfield town	Washington County	Vermont	\$315,419	\$379,148
Walden town	Caledonia County	Vermont	\$175,356	\$210,786
Wallingford town	Rutland County	Vermont	\$364,755	\$438,452
Waltham town	Addison County	Vermont	\$86,292	\$103,727
Wardsboro town	Windham County	Vermont	\$156,323	\$187,908
Warren town	Washington County	Vermont	\$310,799	\$373,595
Washington town	Orange County	Vermont	\$187,736	\$225,667
Waterbury town	Washington County	Vermont	\$951,799	\$1,144,107
Waterbury village		Vermont	\$338,886	\$407,356
Waterford town	Caledonia County	Vermont	\$232,083	\$278,975
Waterville town	Lamoille County	Vermont	\$130,085	\$156,368
Weathersfield town	Windsor County	Vermont	\$510,176	\$613,256
Wells River village		Vermont	\$71,325	\$85,736
Wells town	Rutland County	Vermont	\$213,420	\$256,541
West Burke village		Vermont	\$61,162	\$73,520
West Fairlee town	Orange County	Vermont	\$125,280	\$150,593
West Haven town	Rutland County	Vermont	\$45,641	\$54,862
West Rutland town	Rutland County	Vermont	\$400,417	\$481,320
West Windsor town	Windsor County	Vermont	\$194,573	\$233,886
Westfield town	Orleans County	Vermont	\$92,020	\$110,613
Westford town	Chittenden County	Vermont	\$391,917	\$471,103
Westminster town	Windham County	Vermont	\$553,969	\$665,897
Westminster village		Vermont	\$50,445	\$60,637
Westmore town	Orleans County	Vermont	\$59,129	\$71,076
Weston town	Windsor County	Vermont	\$101,259	\$121,718
Weybridge town	Addison County	Vermont	\$152,258	\$183,022

Wheelock town	Caledonia County	Vermont	\$152,628	\$183,466
Whiting town	Addison County	Vermont	\$76,868	\$92,399
Whitingham town	Windham County	Vermont	\$238,920	\$287,193
Williamstown town	Orange County	Vermont	\$648,946	\$780,063
Williston town	Chittenden County	Vermont	\$1,823,773	\$2,192,262
Wilmington town	Windham County	Vermont	\$334,266	\$401,804
Windham town	Windham County	Vermont	\$74,097	\$89,068
Windsor town	Windsor County	Vermont	\$618,642	\$743,637
Winhall town	Bennington County	Vermont	\$135,813	\$163,254
Winooski city		Vermont	\$1,355,727	\$1,629,648
Wolcott town	Lamoille County	Vermont	\$310,799	\$373,595
Woodbury town	Washington County	Vermont	\$163,899	\$197,015
Woodford town	Bennington County	Vermont	\$74,466	\$89,512
Woodstock town	Windsor County	Vermont	\$542,697	\$652,348
Woodstock village		Vermont	\$158,910	\$191,018
Worcester town	Washington County	Vermont	\$189,399	\$227,667
			\$114,770,971	\$137,960,126